

WAAS CH <b>48932</b> <b>W14A</b>	APP CRS <b>140°</b>	Rwy Idg <b>3205</b> TDZE <b>876</b> Apt Elev <b>876</b>
--	------------------------	---

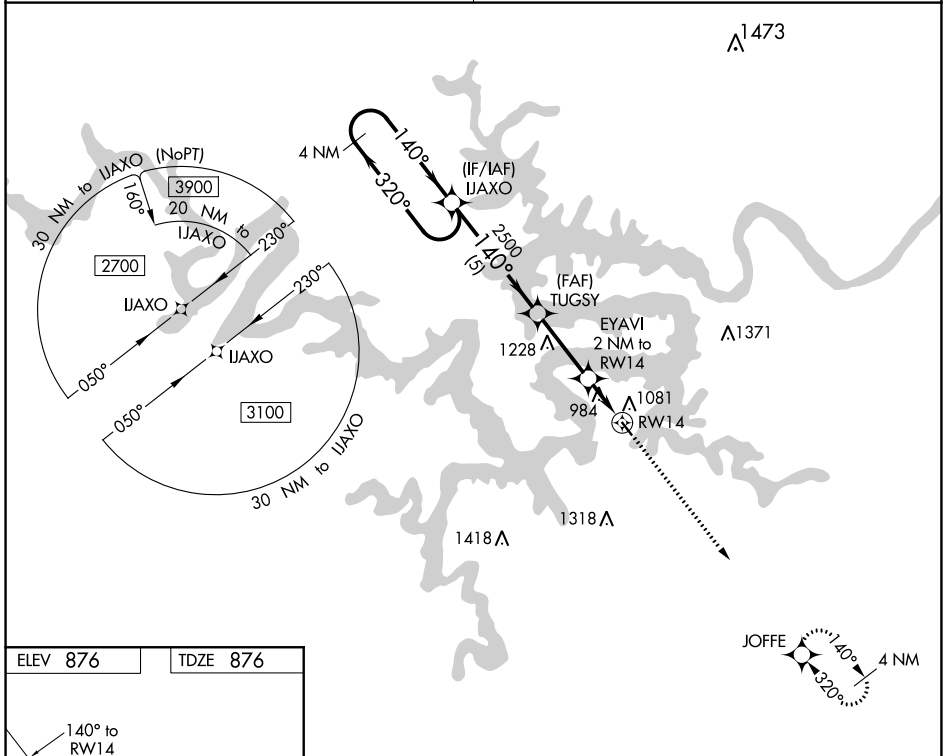
# RNAV (GPS) RWY 14

GRAND GLAIZE-OSAGE BEACH (K15)

**⚠ NA** Use Kaiser Lake Ozark altimeter setting; when not received, use Camdenton altimeter setting and increase all MDA 40 feet. DME/DME RNP- 0.3 NA. Procedure NA at night. Helicopter visibility reduction below 1 SM NA.

MISSED APPROACH: Climb to 2700 direct JOFFE and hold.

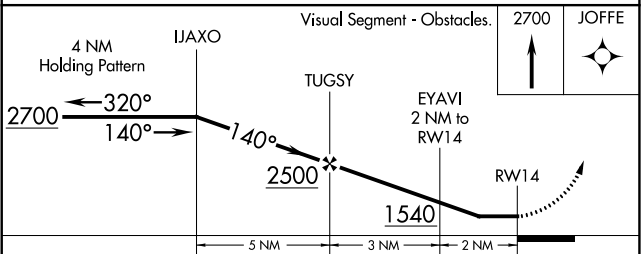
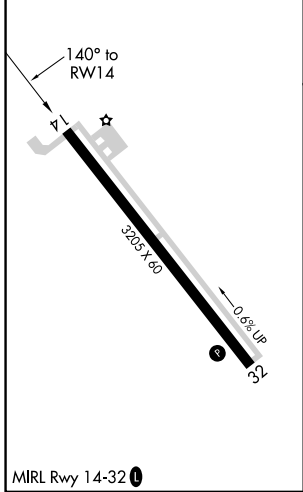
MIZZU APP CON <b>124.1 353.925</b>	UNICOM <b>122.8 (CTAF) 0</b>
---------------------------------------	---------------------------------



NC-3, 05 SEP 2024 to 03 OCT 2024

NC-3, 05 SEP 2024 to 03 OCT 2024

ELEV 876	TDZE 876
----------	----------



CATEGORY	A	B	C	D
LP MDA	1300-1	424 (500-1)		NA
LNAV MDA	1360-1	484 (500-1)		NA
CIRCLING	1420-1	544 (600-1)		NA