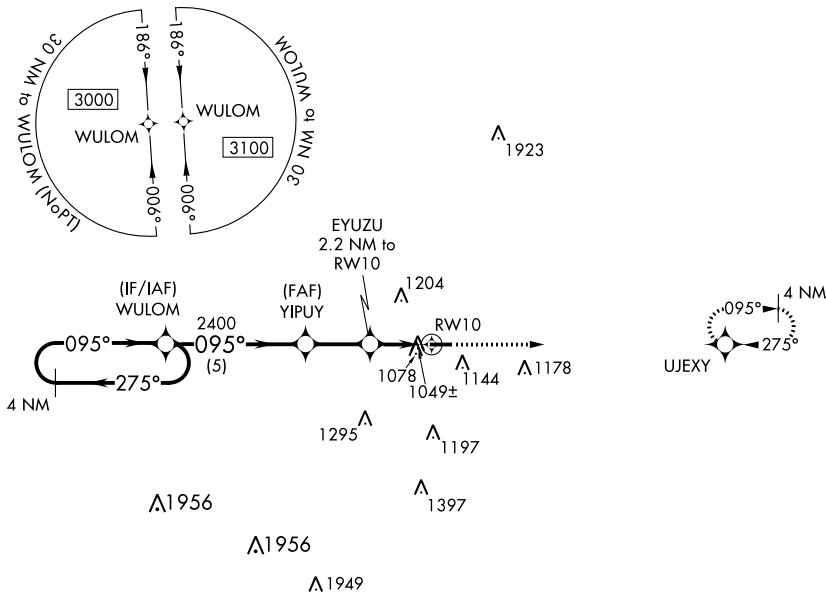


WAAS CH <b>61134</b> <b>W10A</b>	APP CRS <b>095°</b>	Rwy Idg TDZE Apt Elev	<b>4002</b> <b>920</b> <b>920</b>
----------------------------------------	------------------------	-----------------------------	-----------------------------------------

# RNAV (GPS) RWY 10

MASON JEWETT FLD (TEW)

RNP APCH.		MISSED APPROACH: Climb to 3000 direct UJEXY and hold.
▼ Rwy 10 helicopter visibility reduction below 1 SM NA. Straight-in Rwy 10 ▲ NA at night, Circling Rwy 10 NA at night.		
AWOS-3P <b>119.425</b>	GREAT LAKES APP CON ★ <b>118.65 226.4</b>	UNICOM <b>122.7 (CTAF) 0</b>



ELEV 920	TDZE 920
4002 X 75 28 01 095° to RWY 10	
MRL Rwy 10-28 0 REIL Rwy 10 and 28 0	

4 NM Holding Pattern	Visual Segment - Obstacles.	3000	UJEXY
WULOM YIPUY EYUZU 2.2 NM to RWY 10 RWY 10	3000 2400 1660	5 NM 2.3 NM 2.2 NM	01 28
CATEGORY	A	B	C
LP MDA	1300-1	380 (400-1)	NA
LNVA MDA	1380-1	460 (500-1)	NA
CIRCLING	1500-1	580 (600-1)	NA

EC-1, 05 SEP 2024 to 03 OCT 2024

EC-1, 05 SEP 2024 to 03 OCT 2024