

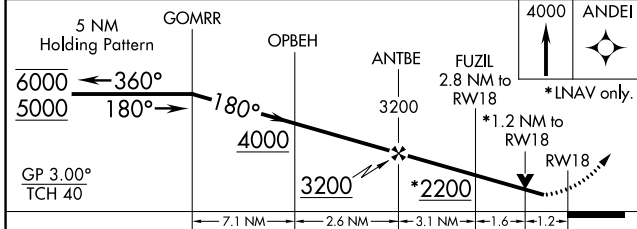
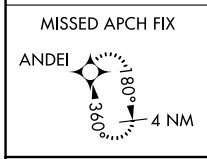
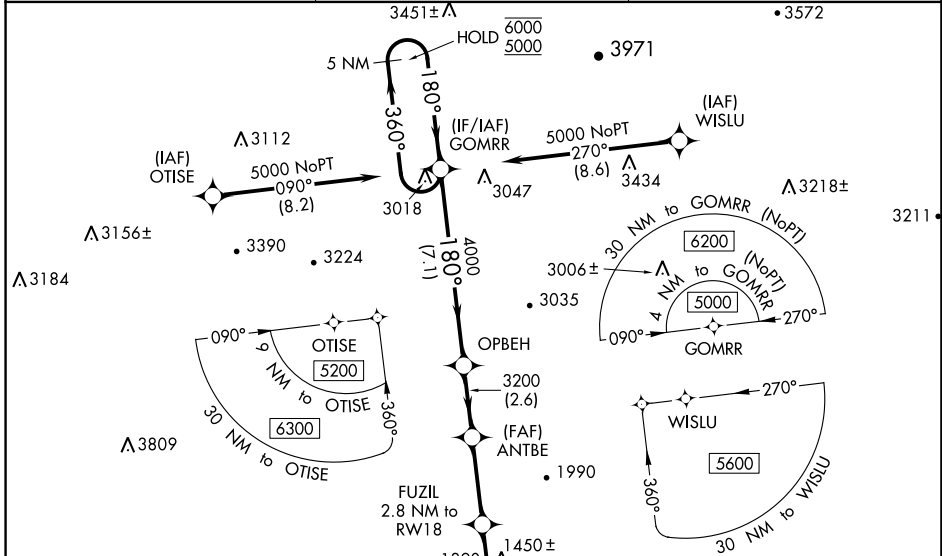
WAAS CH 58317 W18A	APP CRS 180°	Rwy Idg TDZE 1269 Apt Elev 1269
--	------------------------	---

RNAV (GPS) RWY 18

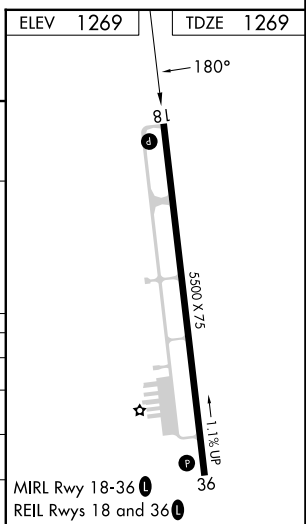
MOUNT AIRY/SURRY COUNTY (MWK)

RNP APCH.	MISSED APPROACH: Climb to 4000 direct ANDEI and hold.
-----------	---

AWOS-3 121.125	GREENSBORO APP CON 124.35 269.225	UNICOM 123.0 (CTAF) 0 •3572
--------------------------	---	--



CATEGORY	A	B	C	D
LPV DA		1522-1	253 (300-1)	
LNAV/VNAV DA		1742-1 3/8	473 (500-1 3/8)	
LNAV MDA	1700-1	431 (500-1)	1700-1 1/4	431 (500-1 1/4)
CIRCLING	1940-1 671 (700-1)	2040-1 771 (800-1)	2180-2 3/4 911 (1000-2 3/4)	2340-3 1071 (1100-3)



SE-2, 05 SEP 2024 to 03 OCT 2024

SE-2, 05 SEP 2024 to 03 OCT 2024