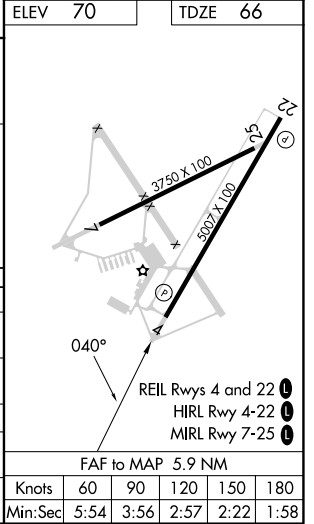
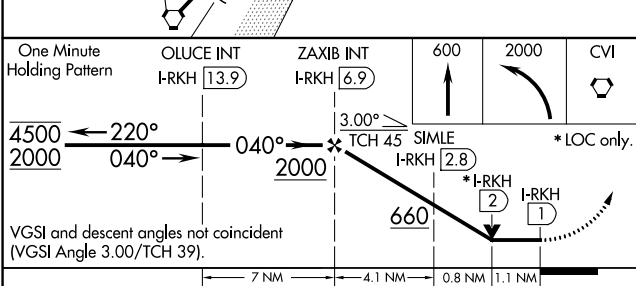
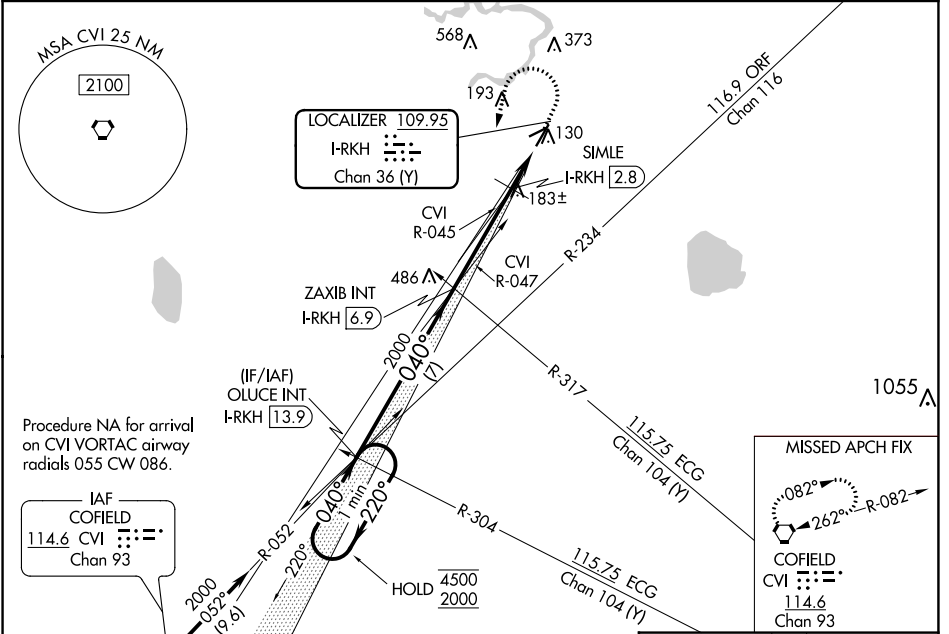


LOC/DME I-RKH	APP CRS	Rwy Idg	5007
109.95	040°	TDZE	66
Chan 36(Y)		Apt Elev	70

LOC RWY 4
SUFFOLK EXEC (SF'Q)

<p>▼ ▲ NA</p>	<p>MISSED APPROACH: Climb to 600 then climbing left turn to 2000 direct CVI VORTAC and hold.</p>	
<p>AWOS-3 119.375</p>	<p>NORFOLK APP CON 127.9 269.425</p>	<p>UNICOM 122.7 (CTAF) 0</p>



CATEGORY	A	B	C	D
S-4	660-1	594 (600-1)	660-1¾	594 (600-1¾)
C CIRCLING	660-1	590 (600-1)	680-1¾ 610 (700-1¾)	680-2 610 (700-2)
SIMLE FIX MINIMUMS (DME REQUIRED)				
S-4	440-1 374 (400-1)			
C CIRCLING	500-1 430 (500-1)	560-1 490 (500-1)	680-1¾ 610 (700-1¾)	680-2 610 (700-2)

NE-3, 05 SEP 2024 to 03 OCT 2024

NE-3, 05 SEP 2024 to 03 OCT 2024