

WAAS CH <b>48819</b> <b>W03A</b>	APP CRS <b>032°</b>	Rwy Idg TDZE Apt Elev	<b>5500</b> <b>147</b> <b>164</b>
--	------------------------	-----------------------------	---

# RNAV (GPS) RWY 3

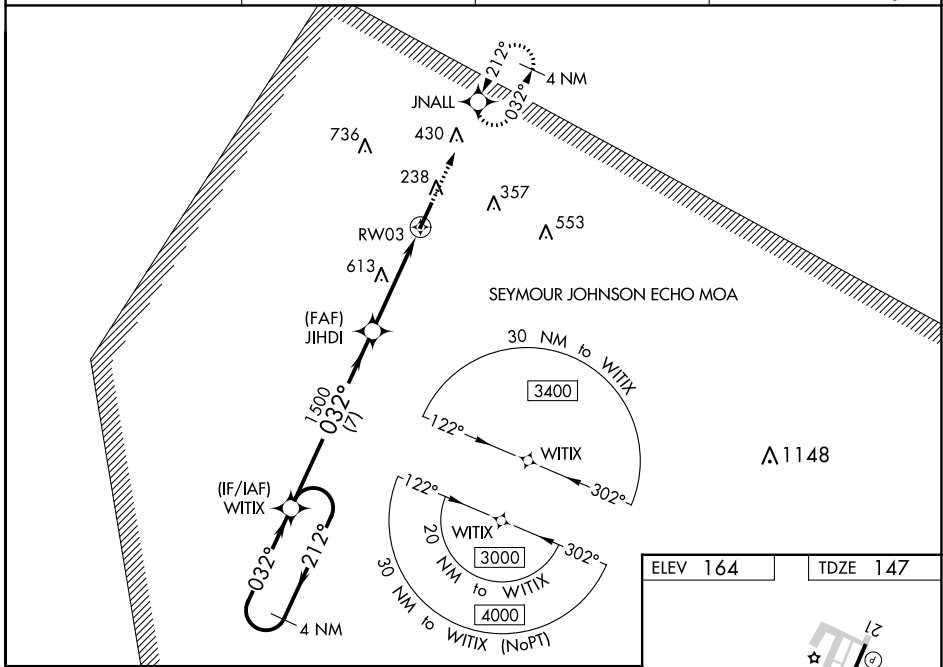
JOHNSTON RGNL (JNX)

**⚠** For uncompensated Baro-VNAV systems, LNAV/VNAV NA below -1.5°C (5°F) or above 54°C (130°F). DME/DME RNP-0.3 NA. When local altimeter setting not received, use Erwin altimeter setting and increase LPV DA to 447 feet, LNAV/VNAV DA to 1020 feet, and all LNAV/VNAV visibilities ½ mile. Increase all MDA 60 feet; increase visibility Cat B, C, and D ¼ mile. Baro-VNAV and VDP NA with Erwin altimeter setting. Inop table does not apply to LNAV/VNAV when using Erwin altimeter setting. For inop MALS R when using Erwin altimeter setting, increase LPV all Cats visibility to 1 mile and LNAV Cats C/D visibility to 2½ miles.

**MALS R**

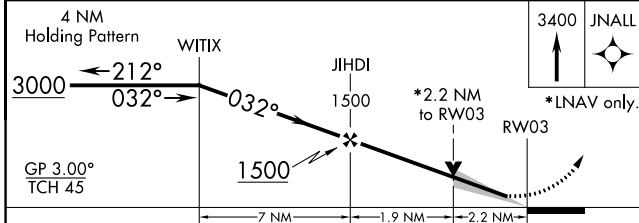
**MISSED APPROACH:**  
Climb to 3400 direct JNALL and hold, continue climb-in-hold to 3400.

AWOS-3 <b>120.225</b>	RALEIGH APP CON <b>125.3 353.675</b>	GCO <b>135.075</b>	UNICOM <b>122.725 (CTAF)</b> <b>0</b>
--------------------------	---	-----------------------	--

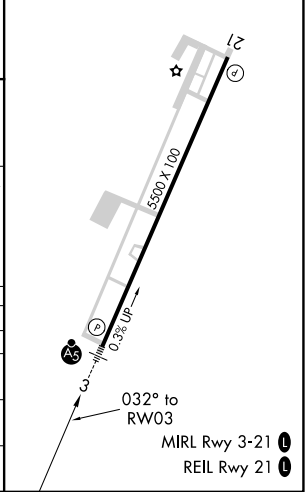


SE-2, 05 SEP 2024 to 03 OCT 2024

SE-2, 05 SEP 2024 to 03 OCT 2024



ELEV 164	TDZE 147
----------	----------



CATEGORY	A	B	C	D
LPV DA	397-½ 250 (300-½)			
LNAV/VNAV DA	970-2½ 823 (900-2½)			
LNAV MDA	880-½ 733 (800-½)	880-1⅞ 733 (800-1⅞)		
<b>C</b> CIRCLING	880-1 716 (800-1)	920-2¼ 756 (800-2¼)	1100-3 936 (1000-3)	