

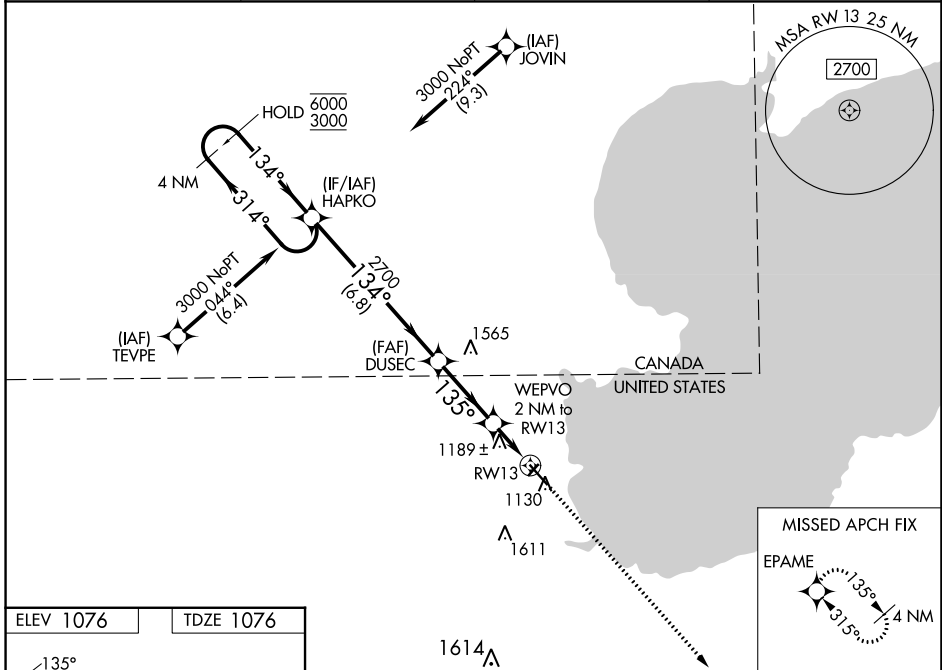
WAAS CH 69437 W13A	APP CRS 135°	Rwy Idg TDZE Apt Elev	5400 1076 1076
--	------------------------	-----------------------------	---

RNAV (GPS) RWY 13

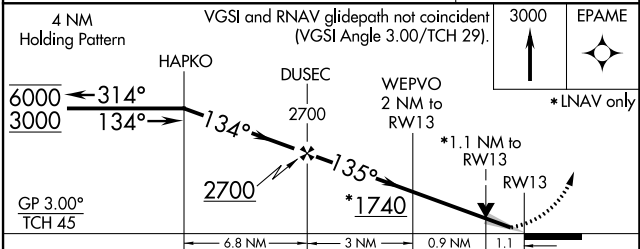
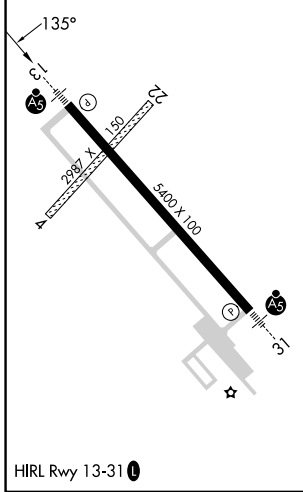
WARROAD INTL MEML (R.R.T)

RNP APCH.	MALSR	MISSED APPROACH: Climb to 3000 direct EPAME and hold.
<p>Circling NA to Rwy 4 and 22. Inop table does not apply. For uncompensated Baro-VNAV systems, LNAV/VNAV NA below -21°C or above 54°C.</p>		

AWOS-3 119.925	MINNEAPOLIS CENTER 134.75 251.1	GCO 121.725	UNICOM 123.05 (CTAF)
--------------------------	---	-----------------------	--------------------------------



ELEV 1076	TDZE 1076
-----------	-----------



CATEGORY	A	B	C	D
LPV DA		1276- ³ / ₄	200 (200- ³ / ₄)	
LNAV/VNAV DA		1365-1	289 (300-1)	
LNAV MDA		1440-1	364 (400-1)	
CIRCLING	1500-1 424 (500-1)	1540-1 464 (500-1)	1960-2 ³ / ₄ 884 (900-2 ³ / ₄)	1960-3 884 (900-3)

NC-1, 05 SEP 2024 to 03 OCT 2024

NC-1, 05 SEP 2024 to 03 OCT 2024