

WAAS CH <b>42706</b> <b>W31A</b>	APP CRS <b>315°</b>	Rwy Idg TDZE Apt Elev	<b>5400</b> <b>1076</b> <b>1076</b>
--	------------------------	-----------------------------	---

# RNAV (GPS) RWY 31

WARROAD INTL MEML (R.R.T)

RNP APCH.

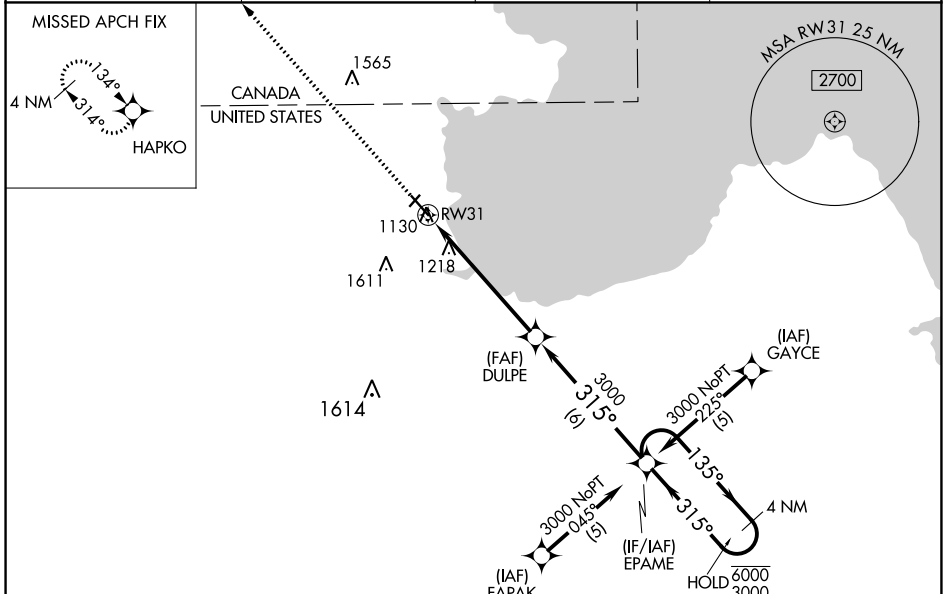
**⚠** Circling NA to Rwy 4 and 22. For uncompensated Baro-VNAV systems, LNAV/VNAV NA below -17°C or above 54°C. For inop ALS increase LNAV/VNAV all Cats visibility to 1 SM and LNAV Cat C/D visibility to 1½ SM.

MALSRL

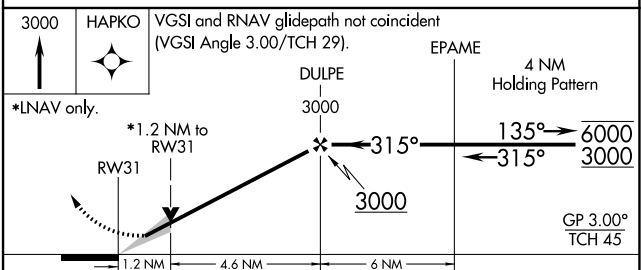
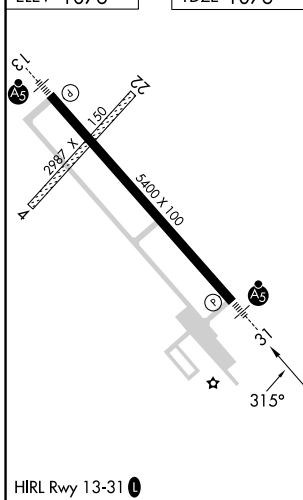


MISSED APPROACH: Climb to 3000 direct HAPKO and hold.

AWOS-3 <b>119.925</b>	MINNEAPOLIS CENTER <b>134.75 251.1</b>	GCO <b>121.725</b>	UNICOM <b>123.05 (CTAF)</b> <b>0</b>
--------------------------	---	-----------------------	---



ELEV 1076	TDZE 1076
-----------	-----------



CATEGORY	A	B	C	D
LPV DA		1326-½	250 (300-½)	
LNAV/VNAV DA		1451-¾	375 (400-¾)	
LNAV MDA	1480-½ 404 (500-½)		1480-¾ 404 (500-¾)	1480-1 404 (500-1)
<b>C</b> CIRCLING	1500-1 424 (500-1)	1540-1 464 (500-1)	1960-2¾ 884 (900-2¾)	1960-3 884 (900-3)

NC-1, 05 SEP 2024 to 03 OCT 2024

NC-1, 05 SEP 2024 to 03 OCT 2024