

APP CRS <b>359°</b>	Rwy Idg TDZE Apt Elev	<b>4001</b> <b>622</b> <b>622</b>
------------------------	-----------------------------	---

# RNAV (GPS) RWY 36

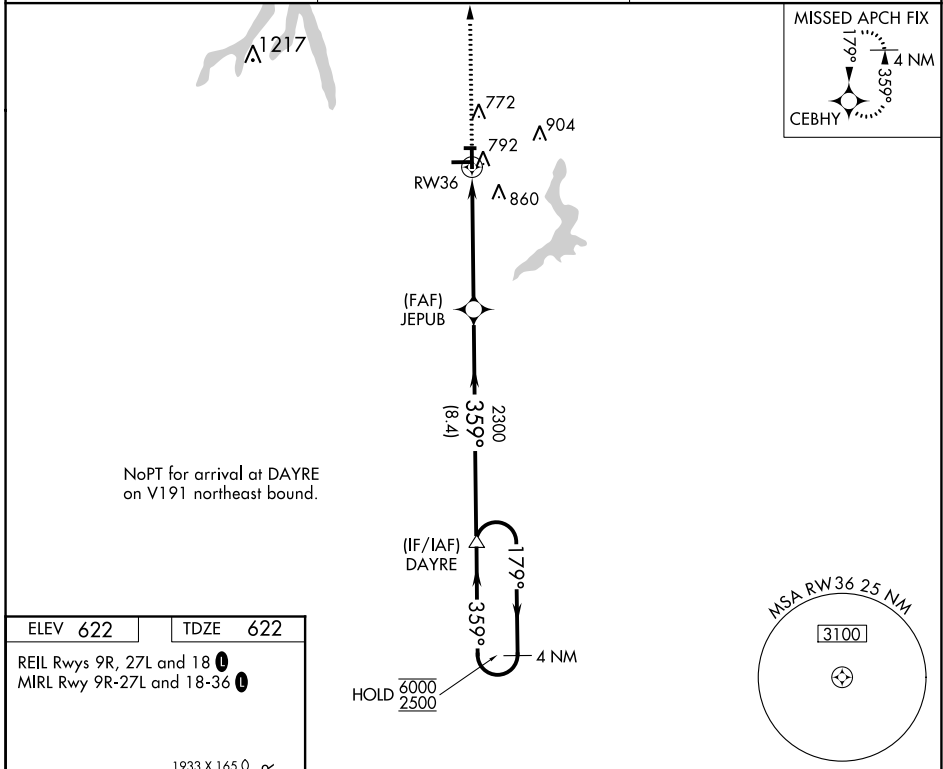
TAYLORVILLE MUNI (TAZ)

RNP APCH - GPS.

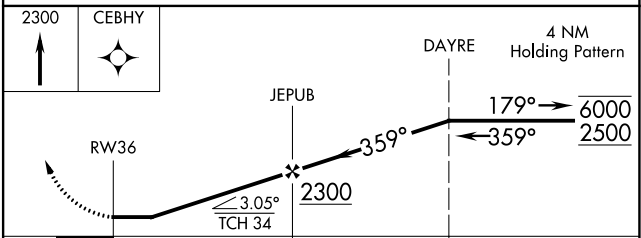
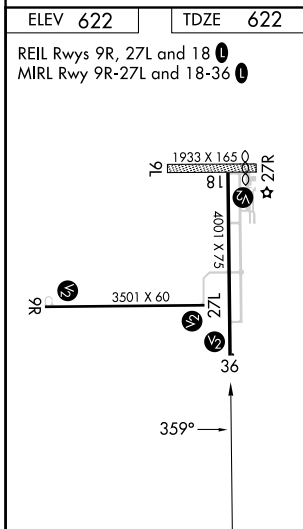
**▼** Rwy 36 helicopter visibility reduction below 1 SM NA. When VGSI inop, Circling Rwy 18 NA at night. Circling NA to Rwy 9L and 27R. When local altimeter setting not received, use Springfield altimeter setting and increase all MDAs 80 feet and LNAV visibility Cat C ¼ SM, and Circling visibility Cat C ¼ SM. LNAV MDA minimums NA at night.

**MISSED APPROACH:**  
Climb to 2300 direct CEBHY and hold.

AWOS-3PT <b>123.875</b>	SAINT LOUIS APP CON ★ <b>126.15 323.0</b>	UNICOM <b>122.8 (CTAF)</b>
----------------------------	--	-------------------------------



NoPT for arrival at DAYRE on V191 northeast bound.



CATEGORY	A	B	C	D
LNAV MDA	1100-1	478 (500-1)	1100-1 3/8 478 (500-1 3/8)	NA
CIRCLING	1160-1	538 (600-1)	1260-1 3/4 638 (700-1 3/4)	NA

EC-3, 05 SEP 2024 to 03 OCT 2024

EC-3, 05 SEP 2024 to 03 OCT 2024