

APP CRS **190°**
 Rwy Idg **5201**
 TDZE **726**
 Apt Elev **726**

RNAV (GPS) RWY 19

JAMES A RHODES (JRO)

RNP APCH - GPS.

▼ Procedure NA at night.
▲ Rwy 19 helicopter visibility reduction below 1 SM NA.

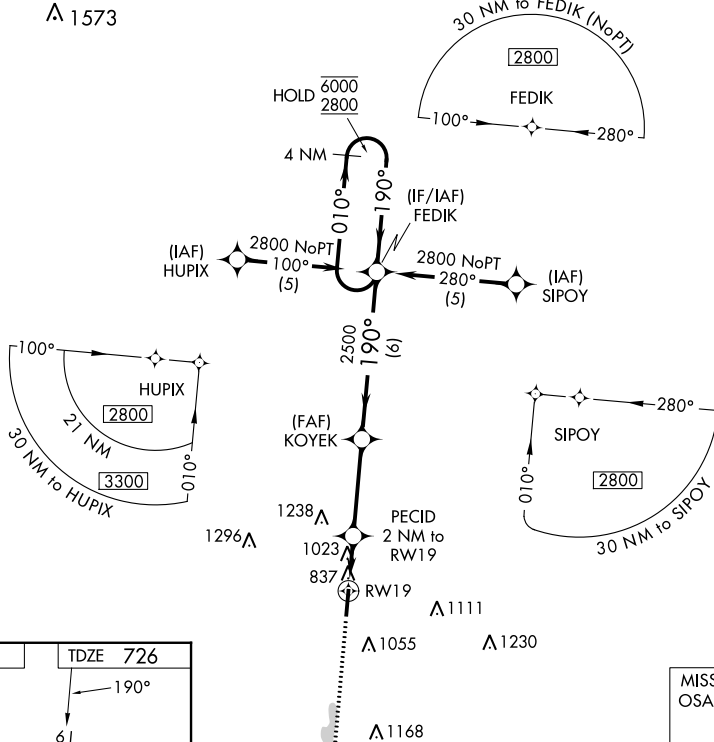
MISSED APPROACH: Climb to 2800 direct OSATE and hold.

AWOS-3 **118.825**

HUNTINGTON APP CON **128.4 270.1**

UNICOM **122.7 (CTAF) 0**

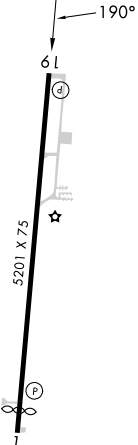
▲ 1573



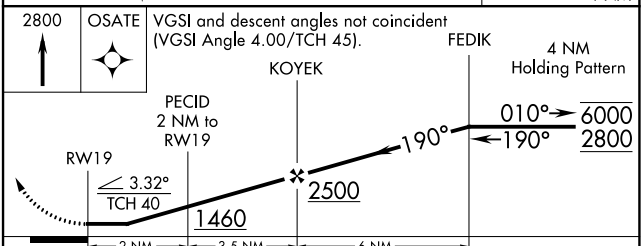
EC-2, 05 SEP 2024 to 03 OCT 2024

EC-2, 05 SEP 2024 to 03 OCT 2024

ELEV 726 TDZE 726



MIRL Rwy 1-19 **0**



| CATEGORY | A | B | C | D |
|----------|-----------------------|-----------------------|----------------------|----------------------------|
| LNAV MDA | 1280-1 | 554 (600-1) | 1280-1 $\frac{5}{8}$ | 554 (600-1 $\frac{5}{8}$) |
| CIRCLING | 1340-1 614 (700-1) | 1480-1 754 (800-1) | 1680-3 | 954 (1000-3) |