

APP CRS	Rwy Idg	2077
008°	TDZE	181
	Apt Elev	181

RNAV (GPS) RWY 1

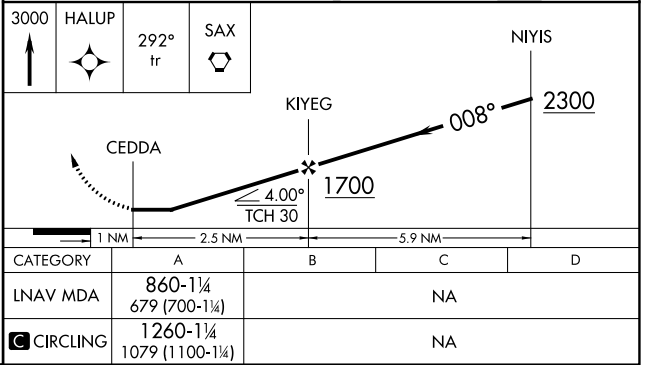
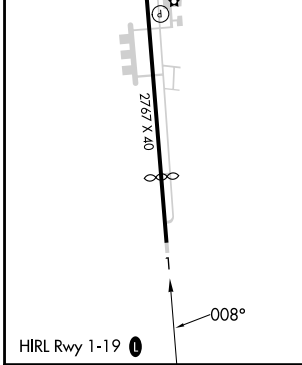
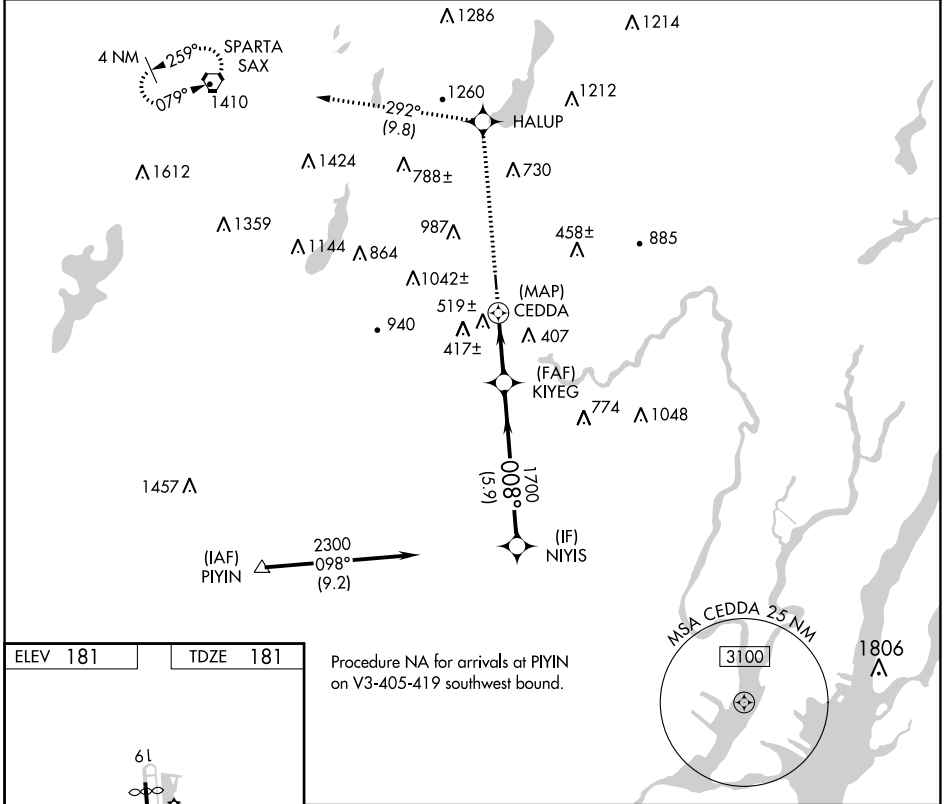
LINCOLN PARK (NØ7)

RNP APCH.

▼ Rwy 1 helicopter visibility reduction below 1 SM NA.
▲ NA Use Teterboro altimeter setting. Procedure NA at night.

MISSED APPROACH: Climb to 3000 direct HALUP and on 292° track to SAX VORTAC and hold.

TEB D-ATIS 114.2 132.85	NEWARK APP CON 127.6 379.9	GCO 121.725	UNICOM 122.8 (CTAF) 0
-----------------------------------	--------------------------------------	-----------------------	---------------------------------



NE-2, 05 SEP 2024 to 03 OCT 2024

NE-2, 05 SEP 2024 to 03 OCT 2024