

WAAS CH 56625 W04A	APP CRS 039°	Rwy Idg TDZE Apt Elev	3799 1383 1394
--	------------------------	-----------------------------	---

RNAV (GPS) RWY 4L

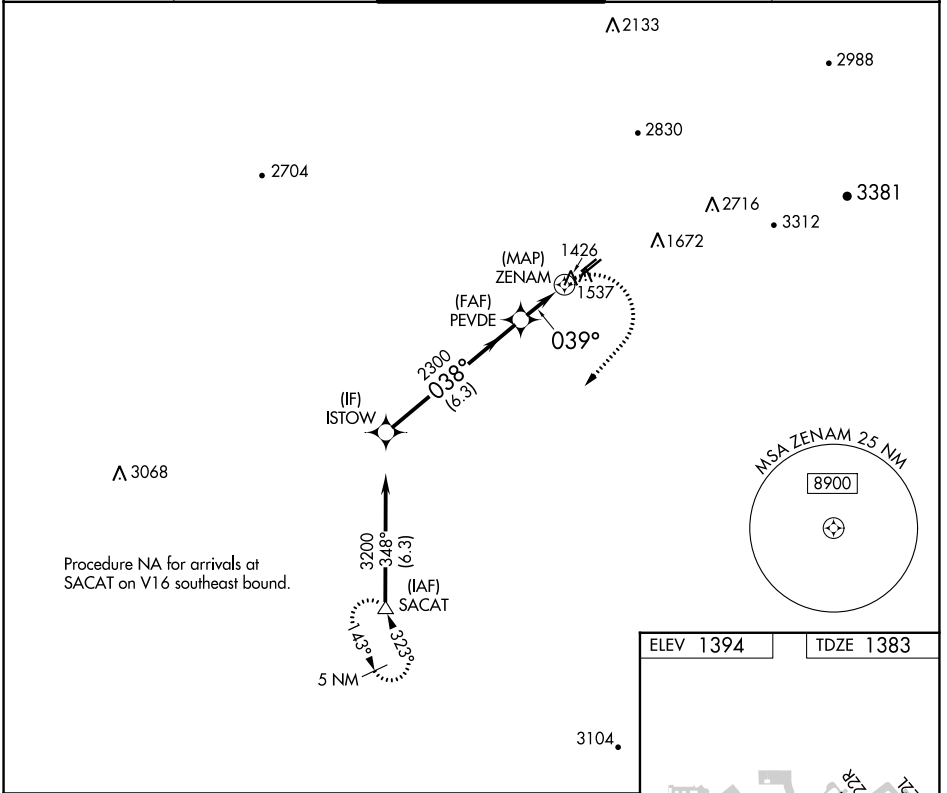
FALCON FLD (F'F'Z)

RNP APCH.

▽
▲ Rwy 4L helicopter visibility reduction below 1 SM NA.

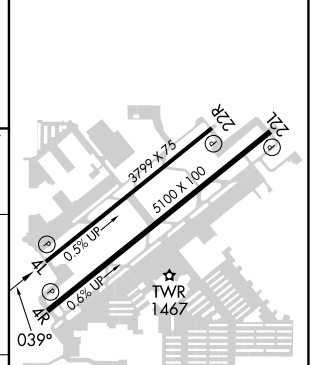
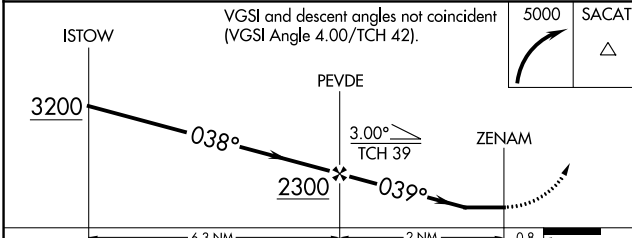
MISSED APPROACH: Climbing right turn to 5000 direct SACAT and hold, continue climb-in-hold to 5000.

ATIS 118.25	PHOENIX APP CON 120.7 239.0	FALCON TOWER * 124.6 (CTAF) 0	GND CON 121.3	UNICOM 122.95
-----------------------	---------------------------------------	---	-------------------------	-------------------------



Procedure NA for arrivals at SACAT on V16 southeast bound.

ELEV 1394	TDZE 1383
-----------	-----------



CATEGORY	A	B	C	D
LP MDA	1780-1	397 (400-1)	1780-1½ 397 (400-1½)	NA
LNAV MDA	1800-1	417 (500-1)	1800-1½ 417 (500-1½)	NA

REIL Rwy 4L, 4R, 22L and 22R
MIRL Rwy 4L-22R and 4R-22L

SW-4, 05 SEP 2024 to 03 OCT 2024

SW-4, 05 SEP 2024 to 03 OCT 2024