

| | | | |
|----------------------|------------------------|-----------------------------|---|
| LOM JV 331 | APP CRS 182° | Rwy Idg TDZE Apt Elev | 7000 476 476 |
|----------------------|------------------------|-----------------------------|---|

NDB RWY 18

CLARK RGNL (JVY)

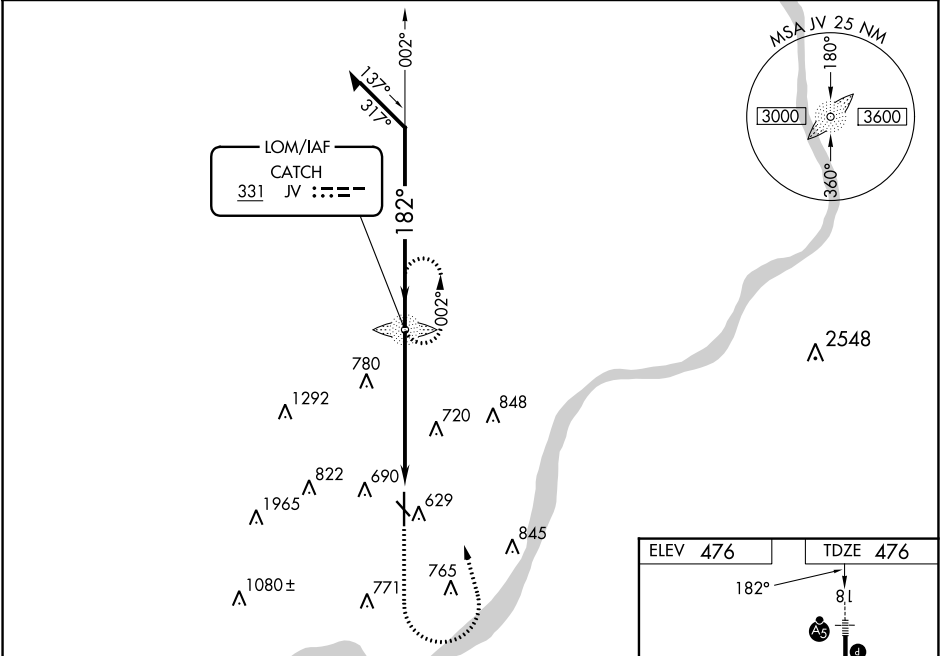
RADAR required for procedure entry.

▽ Circling NA for Cat D southwest of Rws 14 and 36. Circling Rwy 14, 32 NA at night. For inop ALS, increase S-18 Cats A and B visibility to 1 SM and Cats C and D to 1 3/4 SM. When local altimeter setting not received, use Louisville Muhammad Ali Intl altimeter setting and increase all MDAs 40 feet and Circling visibility Cat C 1/8 SM. For inop ALS when using Louisville Muhammad Ali Intl altimeter setting, increase S-18 Cats A and B visibility to 1 SM.



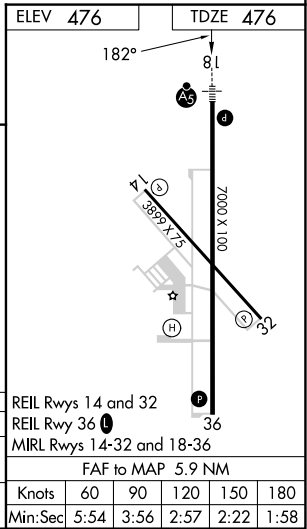
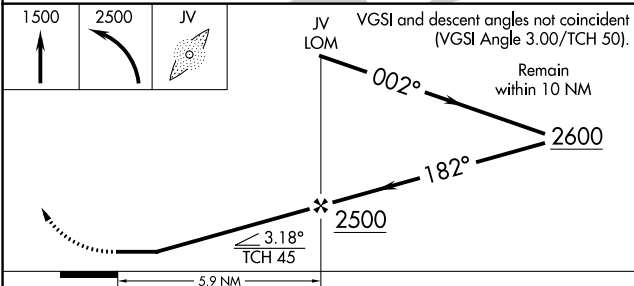
MISSED APPROACH: Climb to 1500 then climbing left turn to 2500 direct CATCH LOM and hold.

| | | | |
|--------------------------|--|---------------------------|---------------------------------|
| AWOS-3 118.575 | LOUISVILLE APP CON 132.075 327.0 | CINC DEL 118.05 | UNICOM 122.7 (CTAF) 0 |
|--------------------------|--|---------------------------|---------------------------------|



EC-2, 05 SEP 2024 to 03 OCT 2024

EC-2, 05 SEP 2024 to 03 OCT 2024



| CATEGORY | A | B | C | D |
|-------------------|------------------------|---|----------------------------|--------------------|
| S-18 | 1080-3/4 604 (700-3/4) | | 1080-1 3/8 604 (700-1 1/8) | |
| C CIRCLING | 1080-1 604 (700-1) | | 1080-1 3/4 604 (700-1 3/4) | 1100-2 624 (700-2) |