

WAAS CH 58308 W18A	APP CRS 176°	Rwy ldg 5200 TDZE 826 Apt Elev 831
--	------------------------	---

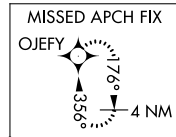
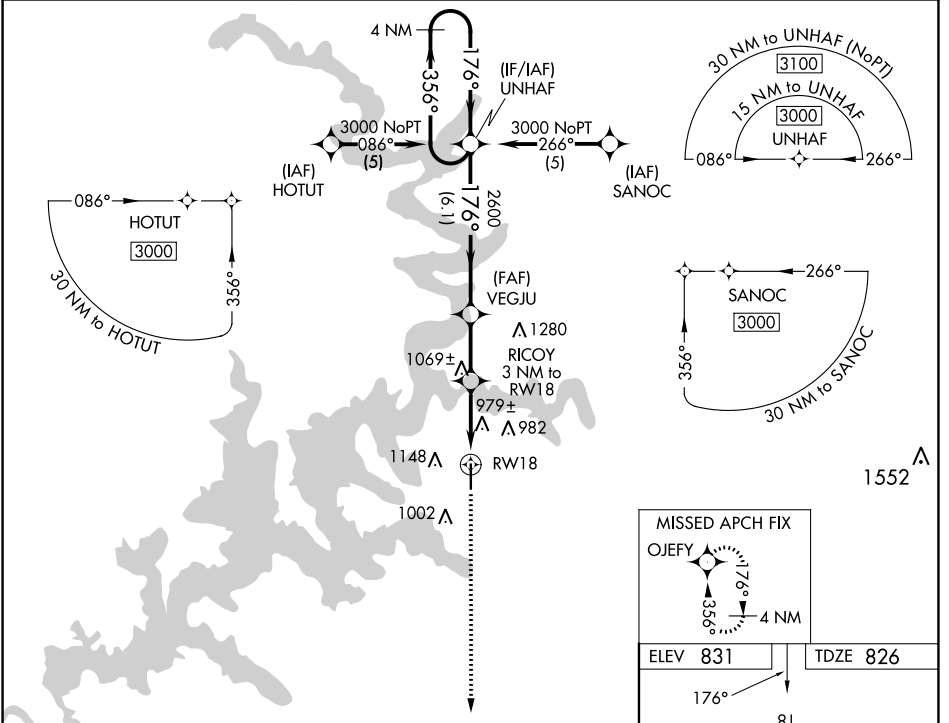
RNAV (GPS) RWY 18

GROVE RGNL (GMJ)

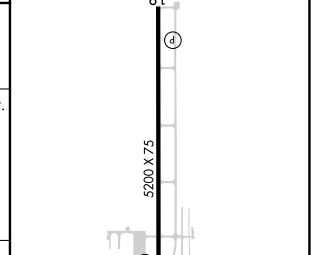
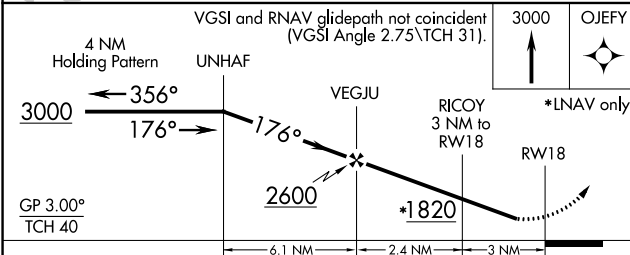
For uncompensated Baro-VNAV systems, LNAV/VNAV NA below -16°C (4°F) or above 54°C (130°F). DME/DME RNP-0.3 NA. Visibility reduction by helicopters NA.

MISSED APPROACH: Climb to 3000 direct OJEFY and hold.

AWOS-3PT 119.025	KANSAS CITY CENTER 128.6 282.325	UNICOM 122.8 (CTAF)
----------------------------	--	-------------------------------



ELEV 831	TDZE 826
----------	----------



CATEGORY	A	B	C	D
LPV DA	1153-1¼	327 (400-1¼)		NA
LNAV/VNAV DA	1346-2	520 (600-2)		NA
LNAV MDA	1240-1	414 (500-1)	1240-1¼ 414 (500-1¼)	NA
CIRCLING	1500-1	669 (700-1)	1500-1¾ 669 (700-1¾)	NA

MIRL Rwy 18-36

SC-1, 05 SEP 2024 to 03 OCT 2024

SC-1, 05 SEP 2024 to 03 OCT 2024