

WAAS CH <b>81923</b> W18A	APP CRS <b>174°</b>	Rwy Idg <b>5001</b> TDZE <b>1177</b> Apt Elev <b>1193</b>
---------------------------------	------------------------	---

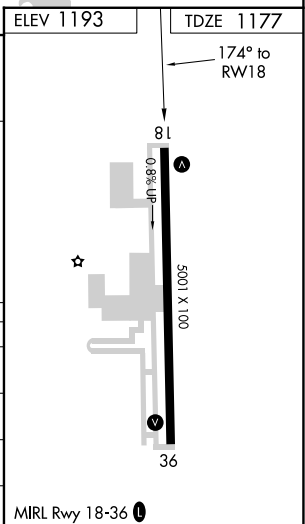
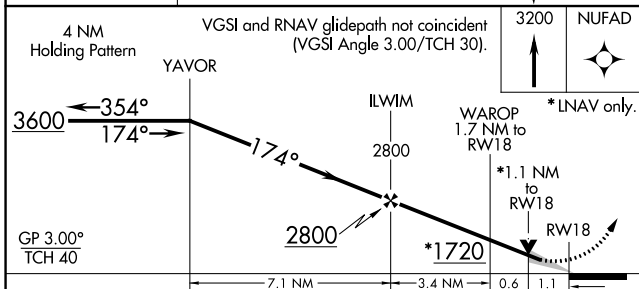
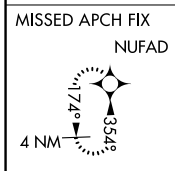
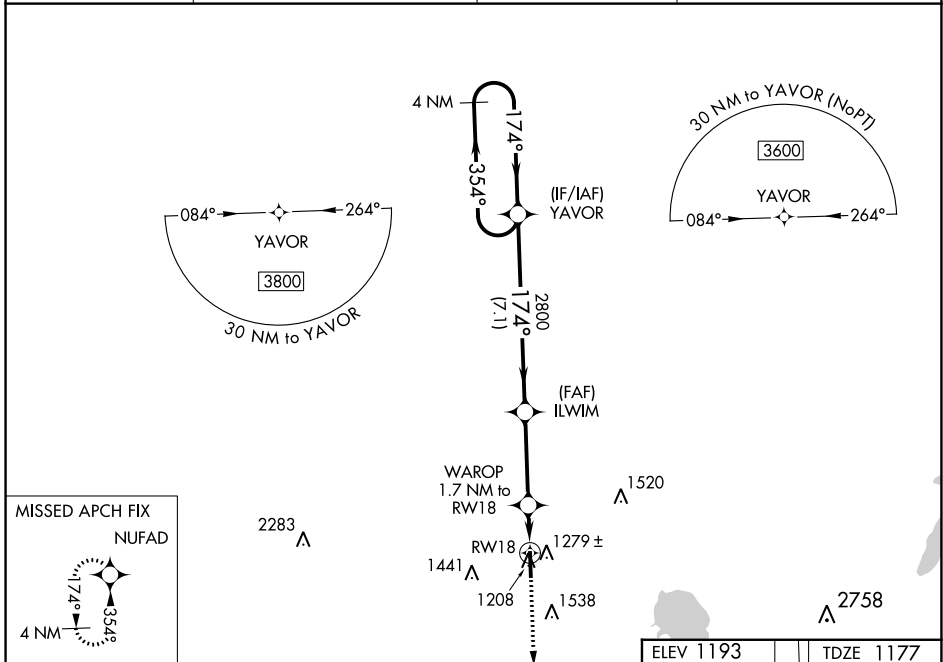
# RNAV (GPS) RWY 18

SUNDANCE (HSD)

**⚠** For uncompensated Baro-VNAV systems, LNAV/VNAV NA below -17°C (2°F) or above 54°C (130°F). Baro-VNAV and VDP NA when using Wiley Post altimeter setting. DME/DME RNP-0.3 NA. Circling Rwy 36 NA at night.

**⚠** MISSED APPROACH: Climb to 3200 direct NUFAD and hold.

AWOS-3 <b>120.975</b>	OKE CITY APP CON <b>124.6 266.8</b>	CLNC DEL <b>123.7</b>	UNICOM <b>122.7 (CTAF)</b> <b>0</b>
--------------------------	--	--------------------------	--



CATEGORY	A	B	C	D
LPV DA	1427-1	250 (300-1)		NA
LNAV/VNAV DA	1473-1½	296 (300-1½)		NA
LNAV MDA	1540-1	363 (400-1)	1540-1½ 363 (400-1½)	NA
CIRCLING	1740-1 547 (600-1)	1840-1 647 (700-1)	1840-1¾ 647 (700-1¾)	NA

SC-1, 05 SEP 2024 to 03 OCT 2024

SC-1, 05 SEP 2024 to 03 OCT 2024