

VORTAC SQS <b>114.7</b> Chan <b>94</b>	APP CRS <b>145°</b>	Rwy Idg TDZE Apt Elev	<b>N/A</b> <b>N/A</b> <b>340</b>
--	------------------------	-----------------------------	--

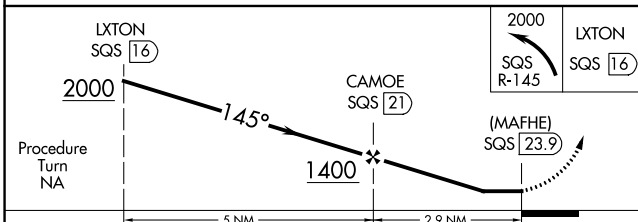
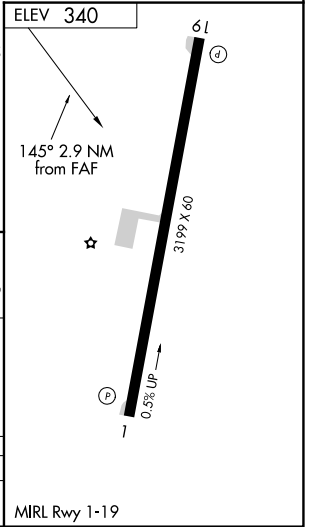
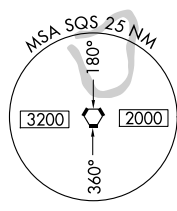
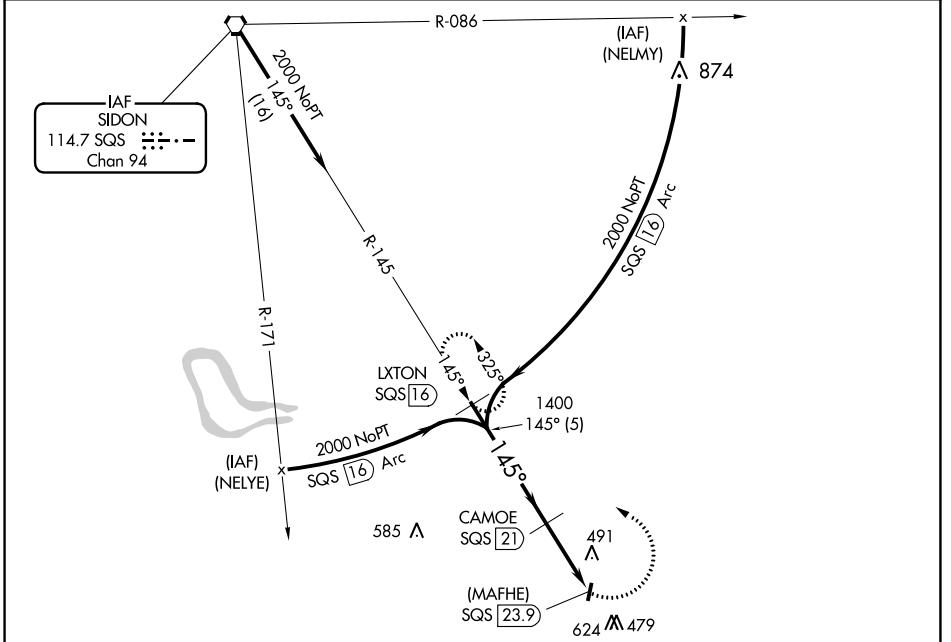
# VOR/DME or GPS-A

C A MOORE (19M)

**▼** Use Greenwood altimeter setting.  
**▲ NA** Procedure NA at night.  
 Helicopter visibility reduction below 1 SM NA.

MISSED APPROACH: Climbing left turn to 2000 on SQS R-145 to LXTON 16 DME and hold.

GWO ASQS <b>119.975</b>	MEMPHIS CENTER <b>132.5 259.1</b>	CTAF <b>122.9</b>
----------------------------	--------------------------------------	----------------------



CATEGORY	A	B	C	D
CIRCLING	920-1 580 (600-1)	960-1¼ 620 (700-1¼)	1020-2 680 (700-2)	NA

SC-4, 05 SEP 2024 to 03 OCT 2024

SC-4, 05 SEP 2024 to 03 OCT 2024