

WAAS CH 93736 W26A	APP CRS 260°	Rwy Idg TDZE Apt Elev	2922 1476 1476
--	------------------------	-----------------------------	---

RNAV (GPS) RWY 26

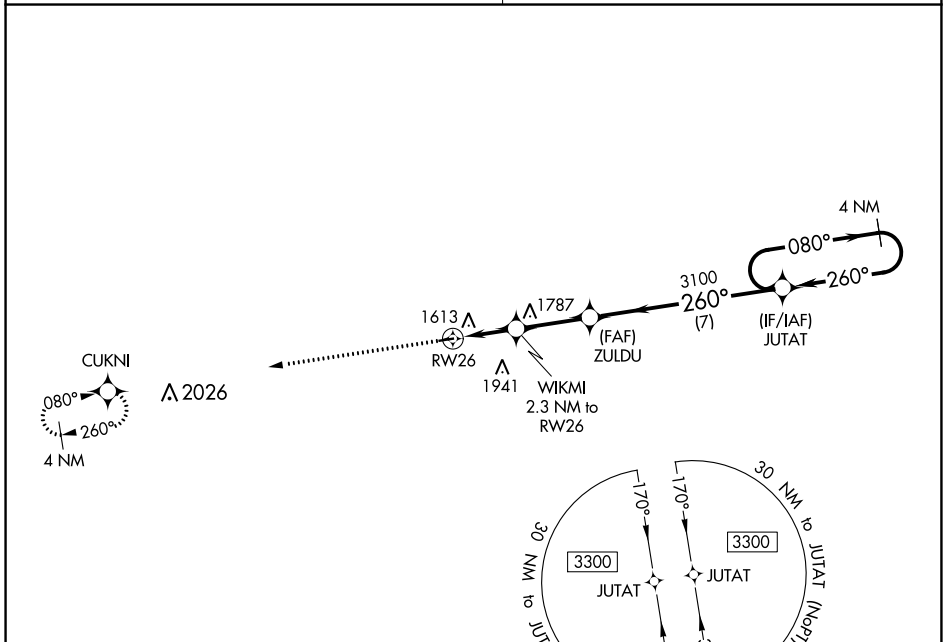
MOUNTAIN GROVE MEML (1M0)

⚠ DME/DME RNP-0.3 NA. Procedure NA at night. Use Fort Leonard Wood altimeter setting, when not received use Springfield altimeter setting and increase all MDA 20 feet. Helicopter visibility reduction below 1 SM NA.

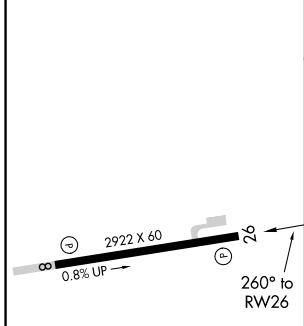
MISSED APPROACH: Climb to 3300 direct CUKNI and hold.

KANSAS CITY CENTER
128.35 284.675

CTAF
122.9



ELEV 1476	TDZE 1476
-----------	-----------



3300		CUKNI		Visual Segment - Obstacles.			
↑		✧		JUTAT 4 NM Holding Pattern			
WIKMI 2.3 NM to RW26		ZULDU		3100			
RW26		2240		080° → 3300			
← 2.3 NM		← 2.7 NM		← 7 NM			
CATEGORY	A	B		C	D		
LP MDA	2120-1	644 (700-1)				NA	
LNAV MDA	2160-1	684 (700-1)				NA	
C CIRCLING	2160-1	2240-1				NA	
	684 (700-1)	764 (800-1)					

MIRL Rwy 8-26 **Ⓛ**
REIL Rwy 8 and 26 **Ⓛ**

NC-3, 05 SEP 2024 to 03 OCT 2024

NC-3, 05 SEP 2024 to 03 OCT 2024