

WAAS CH <b>97534</b> <b>W35A</b>	APP CRS <b>354°</b>	Rwy Idg <b>5100</b> TDZE <b>1605</b> Apt Elev <b>1605</b>
--	------------------------	---

# RNAV (GPS) RWY 35

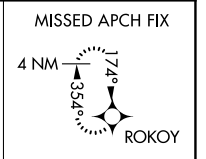
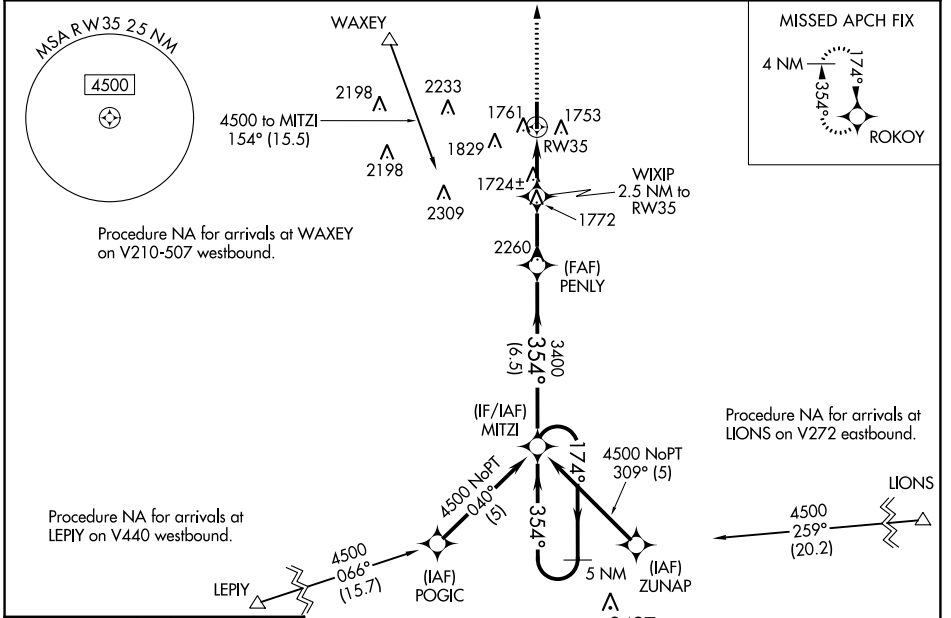
WEATHERFORD STAFFORD (OJA)

**RNP APCH.**

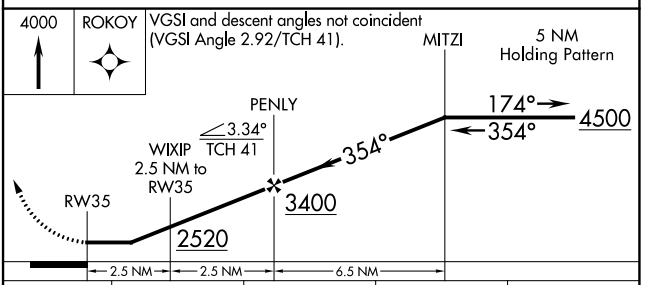
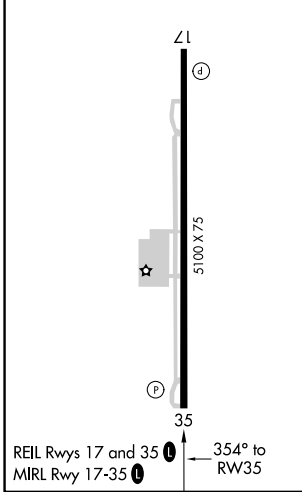
▼ Straight-in Rwy 35 at night, Circling Rwy 17 at night, operational VGSI required, remain on or above VGSI glidepath until threshold. Rwy 17 helicopter visibility below 1 SM NA. When local altimeter setting not received, use Clinton Rgnl altimeter setting: increase all MDA 40 feet and visibility Cat C ¼ mile.

▲ MISSED APPROACH: Climb to 4000 direct ROKOY and hold.

AWOS-3PT <b>118.575</b>	FORT WORTH CENTER <b>128.4 269.37</b>	UNICOM <b>122.8 (CTAF) 0</b>
----------------------------	--	---------------------------------



ELEV 1605	TDZE 1605
-----------	-----------



CATEGORY	A	B	C	D
LP MDA	1980-1 375 (400-1)			NA
LNAV MDA	2020-1	415 (500-1)	2020-1 1/8 415 (500-1 1/8)	NA
<input checked="" type="checkbox"/> CIRCLING	2080-1 475 (500-1)	2140-1 535 (600-1)	2380-2 1/4 775 (800-2 1/4)	NA

SC-1, 05 SEP 2024 to 03 OCT 2024

SC-1, 05 SEP 2024 to 03 OCT 2024