

LOC/DME I-JUH <b>109.35</b> Chan <b>30(Y)</b>	APP CRS <b>276°</b>	Rwy Idg TDZE Apt Elev	<b>5002</b> <b>3142</b> <b>3178</b>
---	------------------------	-----------------------------	---

# LOC RWY 28

ASHE COUNTY (GEV)

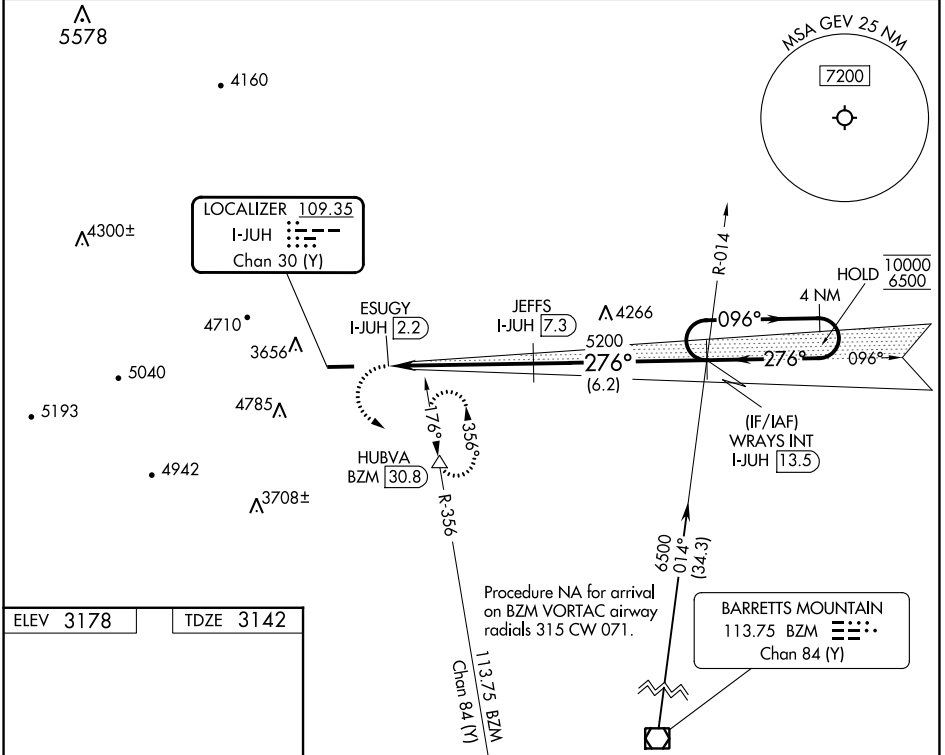
DME required.

**▼** Circling to Rwy 10 NA at night.

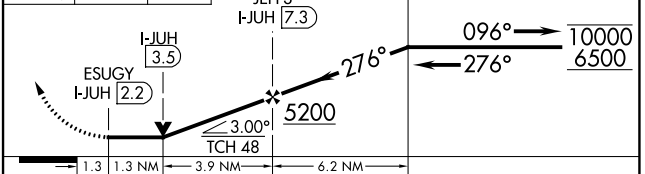
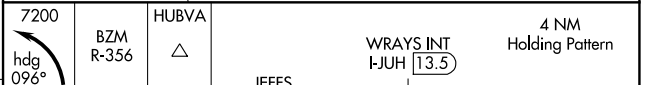
**⚠** **❄** -16°C

MISSED APPROACH: Climbing left turn to 7200 on heading 096° and on BZM VOR/DME R-356 to HUBVA/BZM 30.8 DME and hold, continue climb-in-hold to 7200.

AWOS-3 <b>120.675</b>	ATLANTA CENTER <b>125.15 263.0</b>	UNICOM <b>122.8 (CTAF) 0</b>
--------------------------	---------------------------------------	---------------------------------



ELEV <b>3178</b>	TDZE <b>3142</b>
------------------	------------------



CATEGORY	A	B	C	D
S-LOC 28	3980-1½	838 (900-1½)	3980-2½	838 (900-2½)
<b>☐</b> CIRCLING	4280-1½	1102 (1200-1½)	5140-3 1962 (2000-3)	5180-3 2002 (2100-3)

REIL Rwy 28 **0**  
MIRL Rwy 10-28 **0**

SE-2, 05 SEP 2024 to 03 OCT 2024

SE-2, 05 SEP 2024 to 03 OCT 2024