

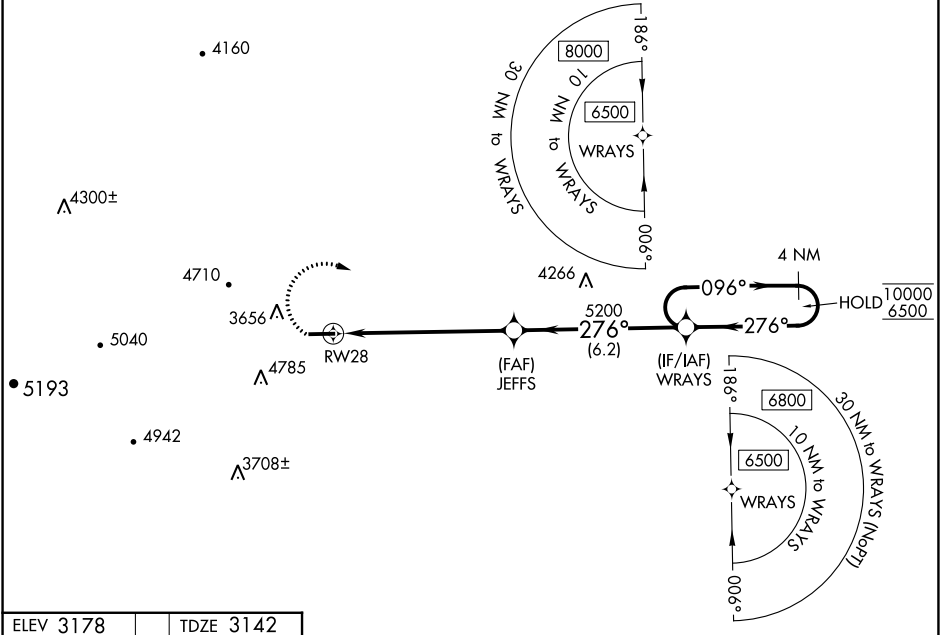
WAAS CH 70437 W28A	APP CRS 276°	Rwy Idg TDZE Apt Elev	5002 3142 3178
--	------------------------	-----------------------------	---

RNAV (GPS) RWY 28

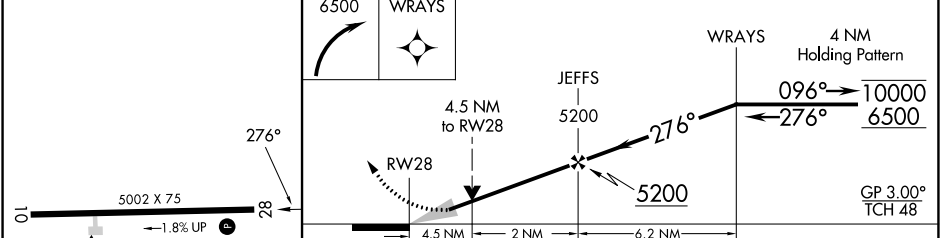
ASHE COUNTY (GEV)

RNP APCH - GPS.	MISSED APPROACH: Climbing right turn to 6500 direct WRAYS and hold, continue climb-in-hold to 6500. *Missed approach requires minimum climb of 350 feet per NM to 5700.
Circling to Rwy 10 NA at night. For uncompensated Baro-VNAV systems, LNAV/VNAV NA below 14°C or above 54°C.	
-16°C	

AWOS-3 120.675	ATLANTA CENTER 125.15 263.0	UNICOM 122.8 (CTAF)
--------------------------	---------------------------------------	-------------------------------



ELEV 3178	TDZE 3142
-----------	-----------



CATEGORY	A	B	C	D
LPV DA*	3799-1 $\frac{1}{8}$		657 (700-1 $\frac{1}{8}$)	
LPV DA	4052-4		910 (900-4)	
LNAV/VNAV DA	4024-4		882 (900-4)	
LNAV MDA	4560-1 $\frac{1}{4}$ 1418 (1400-1 $\frac{1}{4}$)	4560-1 $\frac{1}{2}$ 1418 (1400-1 $\frac{1}{2}$)	4560-3	1418 (1400-3)
CIRCLING	4560-1 $\frac{1}{4}$ 1382 (1400-1 $\frac{1}{4}$)	4560-1 $\frac{1}{2}$ 1382 (1400-1 $\frac{1}{2}$)	5140-3 1962 (2000-3)	5180-3 2002 (2100-3)

REIL Rwy 28
MIRL Rwy 10-28

SE-2, 05 SEP 2024 to 03 OCT 2024

SE-2, 05 SEP 2024 to 03 OCT 2024