

APP CRS	Rwy Idg	<b>3504</b>
<b>189°</b>	TDZE	<b>1207</b>
	Apt Elev	<b>1208</b>

# RNAV (GPS) RWY 18

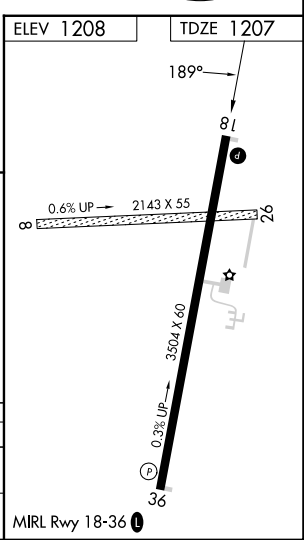
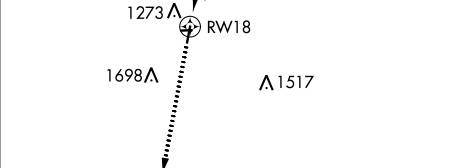
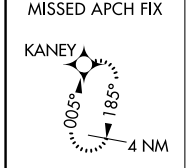
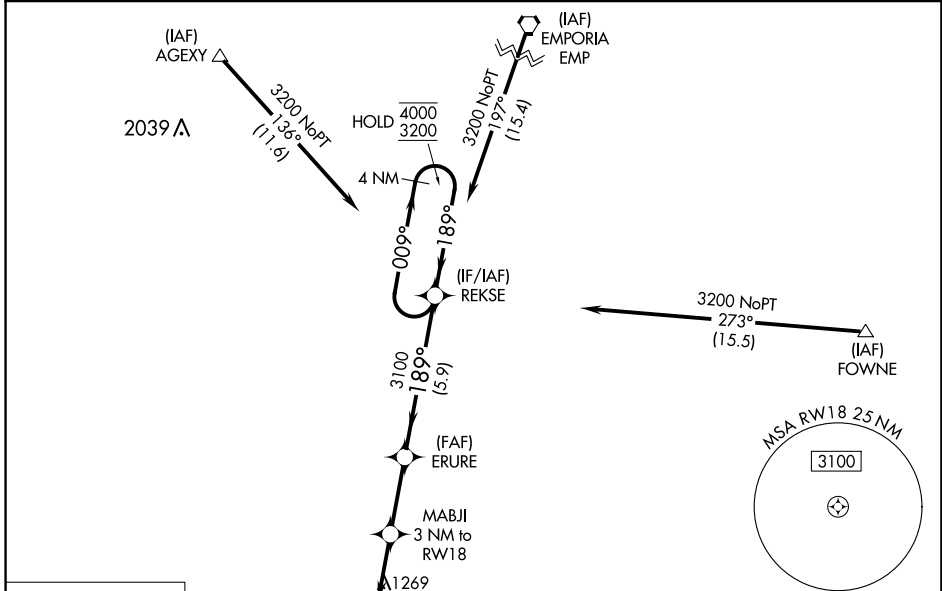
LT WILLIAM M MILLIKEN (13K)

RNP APCH - GPS.

**⚠** Circling NA to Rwys 8 and 26. VDP NA when using Emporia altimeter setting. When local altimeter setting not received, use Emporia altimeter setting and increase all MDAs 80 feet and LNAV Cat C visibility ¼ SM, Circling Cat C visibility ¼ SM.

MISSED APPROACH: Climb to 3200 direct KANEY and hold.

AWOS-3PT <b>120.975</b>	KANSAS CITY CENTER <b>120.2 323.2</b>	UNICOM <b>122.8 (CTAF) 0</b>
----------------------------	--	---------------------------------



3200	KANEY	VGSIs and descent angles not coincident (VGSIs Angle 3.00/TCH 34).			
↑	⬠	MABJI 3 NM to RW18	ERURE	REKSE	4 NM Holding Pattern
		1.1 NM to RW18	1.9 NM	2.8 NM	5.9 NM
		2200	3100	4000	3200
		3.00° TCH 40	189°	009°	189°

CATEGORY	A	B	C	D
LNAV MDA	1600-1	393 (400-1)	1600-1½ 393 (400-1½)	NA
CIRCLING	1640-1 432 (500-1)	1660-1 452 (500-1)	2060-2½ 852 (900-2½)	NA

NC-2, 05 SEP 2024 to 03 OCT 2024

NC-2, 05 SEP 2024 to 03 OCT 2024