

WAAS CH <b>86333</b> <b>W09A</b>	APP CRS <b>095°</b>	Rwy Idg TDZE Apt Elev	<b>5200</b> <b>4086</b> <b>4094</b>
--	------------------------	-----------------------------	---

# RNAV (GPS) RWY 9

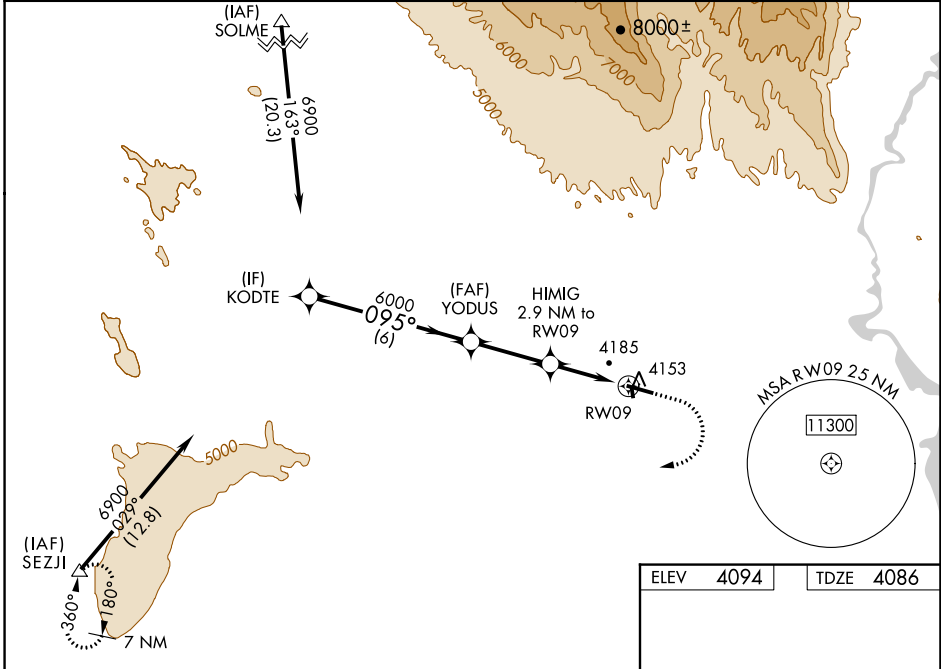
NORTH BIG HORN COUNTY (U68)

**RNP APCH - GPS**

**NA** Baro-VNAV NA when using Greybull altimeter setting. For uncompensated Baro-VNAV systems, LNAV/VNAV NA below -23°C or above 49°C. When Rwy 9 VGSI inop, Straight-in and Circling minimums NA at night. Helicopter visibility reduction below 1 SM NA. When local altimeter setting not received, use Greybull altimeter setting and increase all DA 87 feet and all LPV and LNAV/VNAV visibility 1/8 mile, increase all MDA 100 feet and LNAV Cats C/D visibility 3/8 mile and increase Circling Cat C visibility 1/4 mile. Circling NA to Rws 16 and 34.

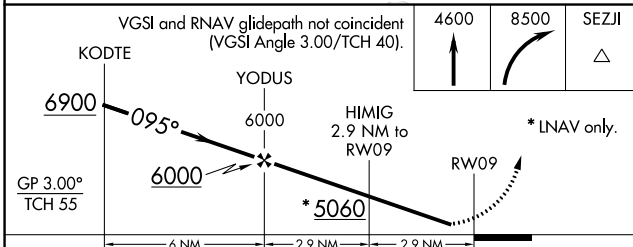
**MISSED APPROACH:** Climb to 4600 then climbing right turn to 8500 direct SEZJI and hold.

AWOS-3 <b>119.925</b>	SALT LAKE CENTER <b>133.25 285.6</b>	UNICOM <b>123.0 (CTAF)</b>
--------------------------	---	-------------------------------

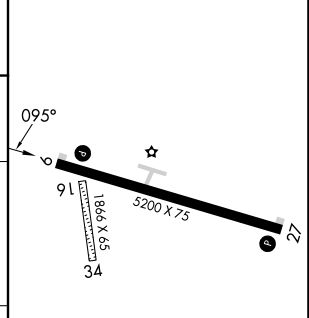


NW-1, 05 SEP 2024 to 03 OCT 2024

NW-1, 05 SEP 2024 to 03 OCT 2024



ELEV	4094	TDZE	4086
------	------	------	------



CATEGORY	A	B	C	D
LPV DA		4336-1	250 (300-1)	
LNAV/VNAV DA		4344-1	258 (300-1)	
LNAV MDA		4440-1	354 (400-1)	
<b>CIRCLING</b>	4520-1 426 (500-1)	4680-1 586 (600-1)	4940-2 1/2 846 (900-2 1/2)	5260-3 1166 (1200-3)

REIL Rws 9 and 27  
MIRL Rwy 9-27