

APP CRS <b>213°</b>	Rwy Idg <b>5752</b>
	TDZE <b>11</b>
	Apt Elev <b>12</b>

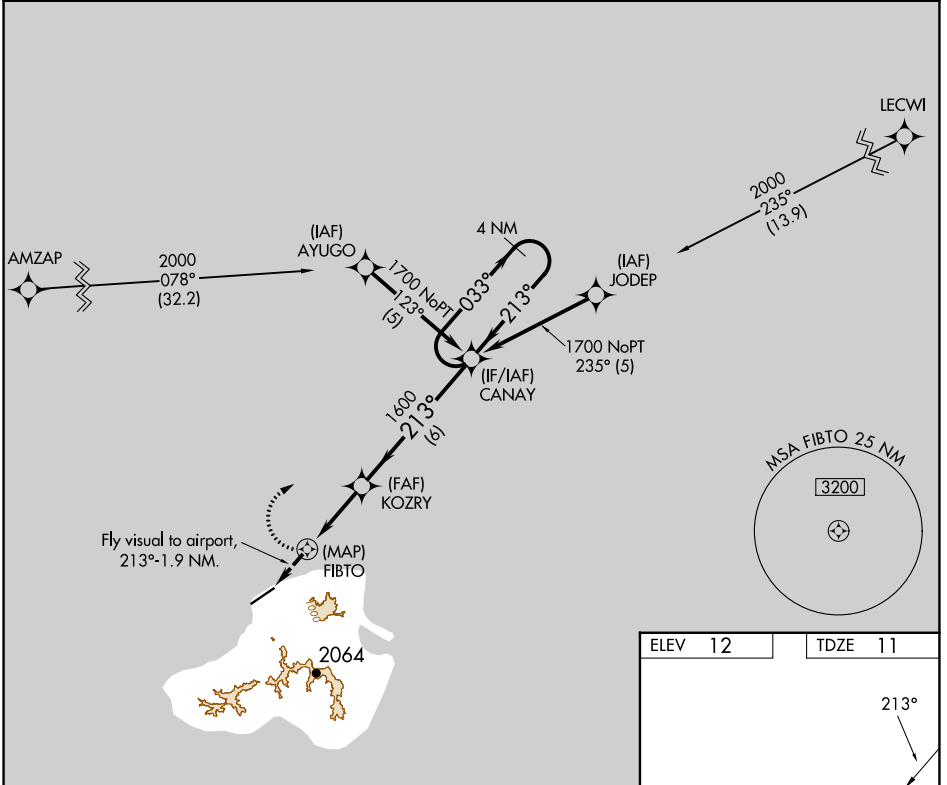
# RNAV (GPS) RWY 23

KOSRAE (TTK)(PTSA)

**⚠** Circling not authorized southeast of Rwy 5-23. Obtain local altimeter setting on CTAF; when not received, procedure not authorized. DME/DME RNP-0.3 NA. No controlled airspace below 5500.

**MISSED APPROACH:** Climbing right turn to 1700 direct CANAY WP and hold.

KOSRAE RADIO  
**123.6 (CTAF) 0**



PAC, 05 SEP 2024 to 31 OCT 2024

PAC, 05 SEP 2024 to 31 OCT 2024

ELEV 12	TDZE 11
---------	---------

**MIRL Rwy 5-23 0**  
**REIL Rwys 5 and 23 0**

1700	CANAY				
Fly visual to airport, 213°-1.9 NM.		CANAY 4 NM Holding Pattern			
FIBTO $\leq 3.00^\circ$ TCH 50		KOZRY			
1600		033° → 1700			
← 213°		← 213°			
1.9 NM		3 NM		6 NM	
CATEGORY	A	B	C	D	
RNAV MDA	800-2	789 (800-2)	800-2¼ 789 (800-2¼)	800-2½ 789 (800-2½)	
CIRCLING	800-2	788 (800-2)	800-2¼ 788 (800-2¼)	800-2½ 788 (800-2½)	