

APP CRS <b>272°</b>	Rwy Idg <b>4006</b>
	TDZE <b>-135</b>
	Apt Elev <b>-129</b>

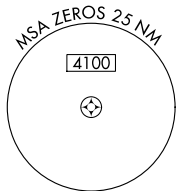
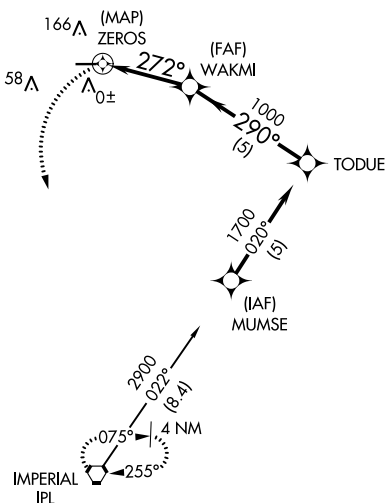
# RNAV (GPS) RWY 26

BRAWLEY MUNI (BWC)

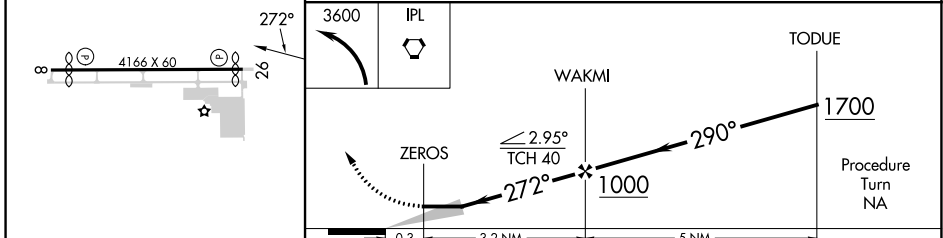
**NA** GPS or RNP-0.3 required. DME/DME RNP-0.3 NA.  
 Use Imperial County altimeter setting.  
 Circling Rwy 8 NA at night.

MISSED APPROACH: Climbing left turn to 3600 direct IPL VORTAC and hold.

IPL ASOS <b>132.175</b>	YUMA CERAP <b>128.55 292.2</b>	CTAF <b>122.9</b>
----------------------------	-----------------------------------	----------------------



ELEV -129	TDZE -135
-----------	-----------



CATEGORY	A	B	C	D
LNAV MDA	360-1	495 (500-1)	360-1¼ 495 (500-1¼)	NA
CIRCLING	560-1	689 (700-1)	560-2 689 (700-2)	NA

REIL Rws 8 and 26  
 MIRL Rwy 8-26

SW-3, 05 SEP 2024 to 03 OCT 2024

SW-3, 05 SEP 2024 to 03 OCT 2024