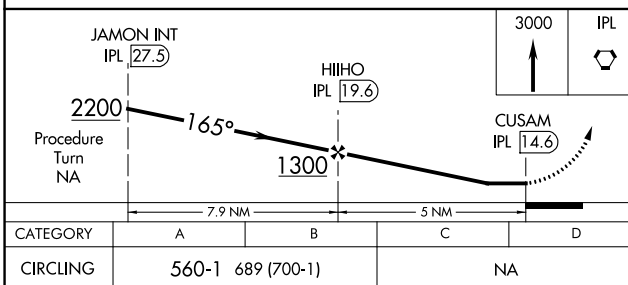
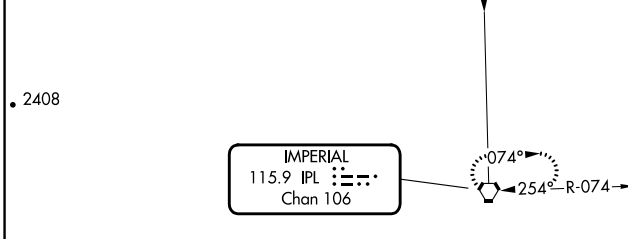
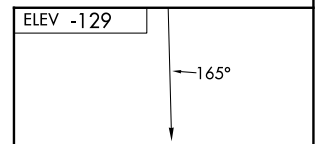
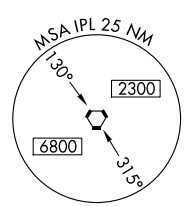
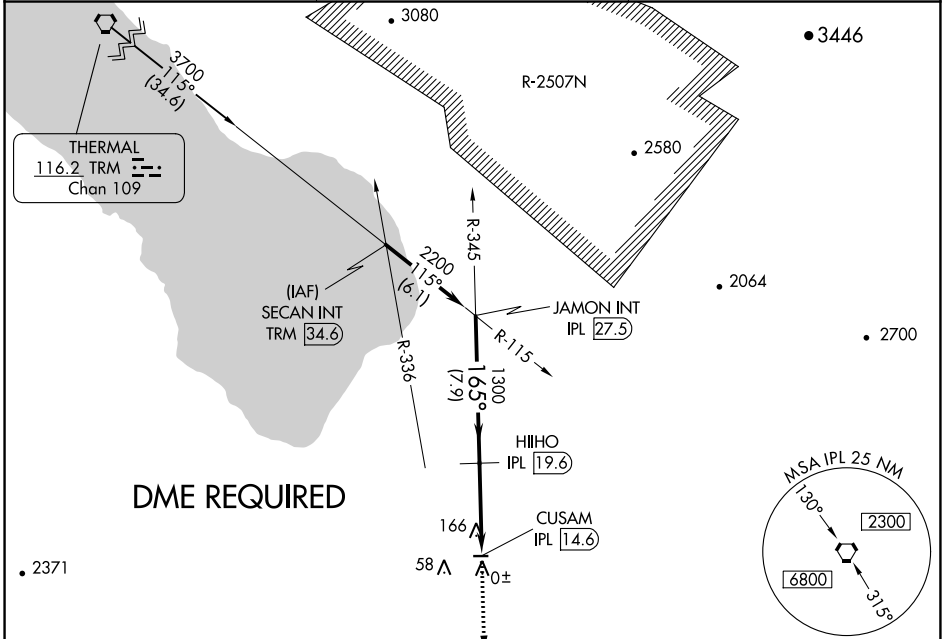


VORTAC IPL <b>115.9</b> Chan <b>106</b>	APP CRS <b>165°</b>	Rwy Idg TDZE Apt Elev	<b>N/A</b> <b>N/A</b> <b>-129</b>
---	------------------------	-----------------------------	---

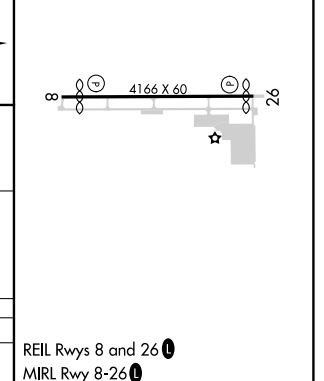
**VOR-B**  
BRAWLEY MUNI (BWC)

▼ ▲ NA	Use Imperial County altimeter setting. DME Required. Circling Rwy 8 NA at night.	MISSED APPROACH: Climb to 3000 direct IPL VORTAC and hold.
-----------	--	--

IPL ASOS <b>132.175</b>	YUMA CERAP <b>128.55 292.2</b>	CTAF <b>122.9</b>
----------------------------	-----------------------------------	----------------------



CATEGORY	A	B	C	D
CIRCLING	560-1	689 (700-1)		NA



SW-3, 05 SEP 2024 to 03 OCT 2024

SW-3, 05 SEP 2024 to 03 OCT 2024