

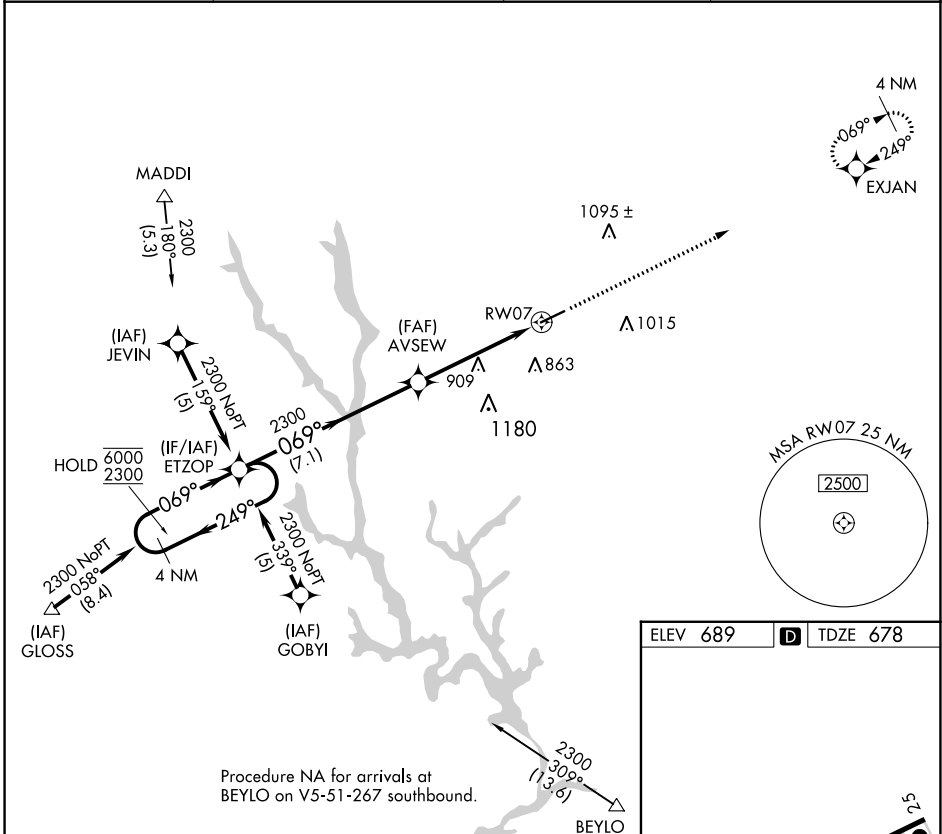
APP CRS	Rwy Idg	5401
069°	TDZE	678
	Apt Elev	689

RNAV (GPS) RWY 7

GREENE COUNTY RGNL (CPP)

RNP APCH - GPS.		MISSED APPROACH: Climb to 2300 direct EXJAN and hold.	
Rwy 7 helicopter visibility reduction below 3/4 SM NA.			

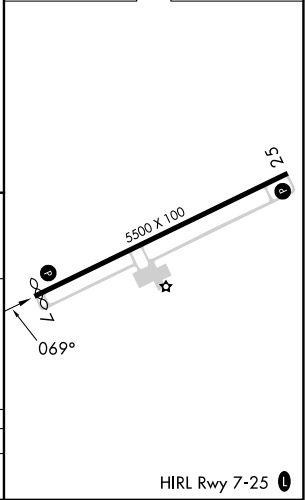
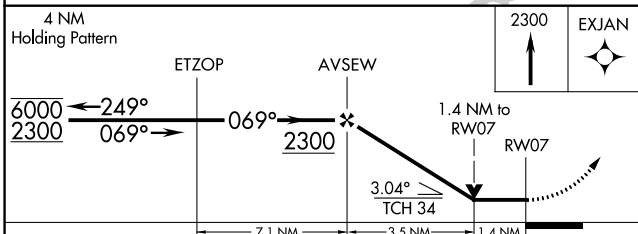
AWOS-3 124.525	ATLANTA APP CON * 132.475 291.1	GCO 121.725	UNICOM 122.8(CTAF) 0
--------------------------	---	-----------------------	--------------------------------



SE-4, 05 SEP 2024 to 03 OCT 2024

SE-4, 05 SEP 2024 to 03 OCT 2024

ELEV 689	D TDZE 678
----------	-------------------



CATEGORY	A	B	C	D
LNAV MDA	1160-1	482 (500-1)	1160-1 3/8	482 (500-1 3/8)

HIRL Rwy 7-25 0