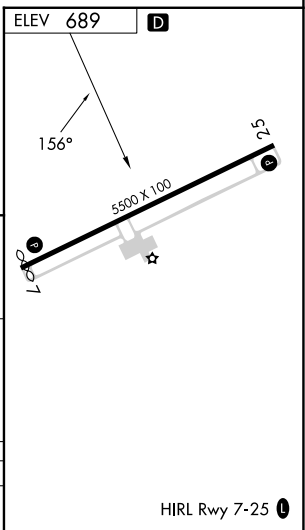
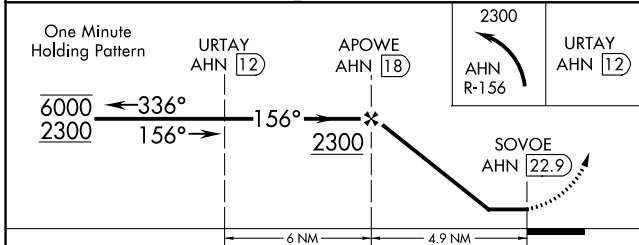
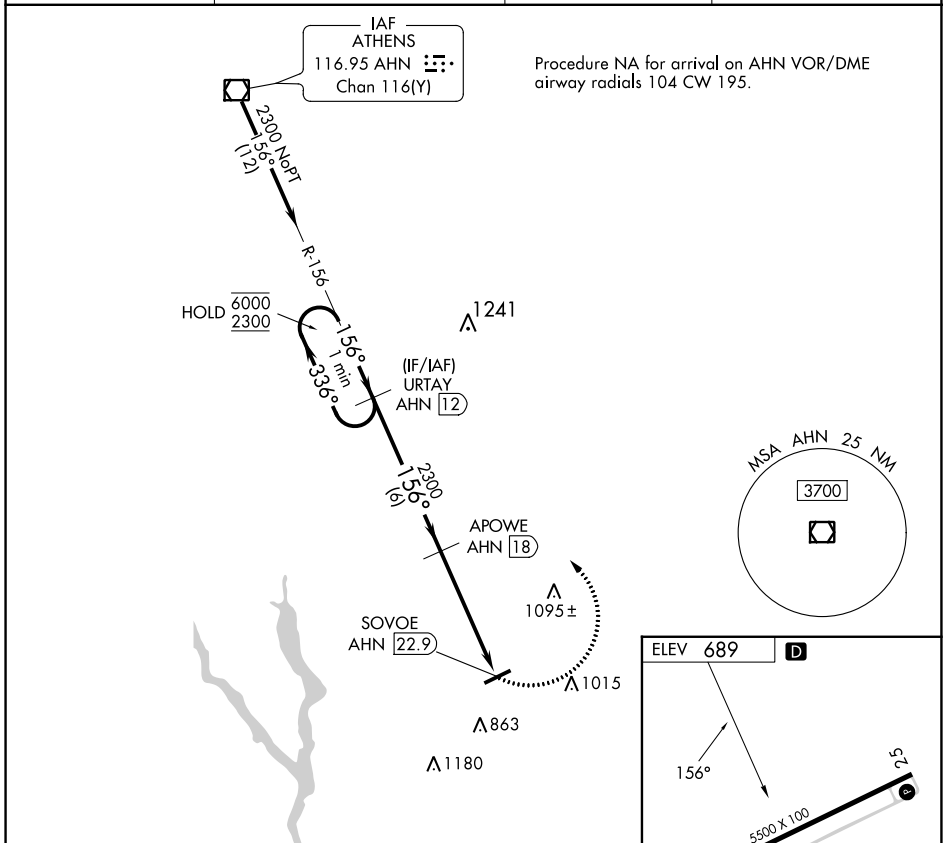


VOR/DME AHN <b>116.95</b> Chan <b>116 (Y)</b>	APP CRS <b>156°</b>	Rwy Idg TDZE Apt Elev	<b>N/A</b> <b>N/A</b> <b>689</b>
---	------------------------	-----------------------------	--

**VOR-B**  
GREENE COUNTY RGNL (CPP)

DME Required.		MISSED APPROACH: Climbing left turn to 2300 on AHN VOR/DME R-156 to URTAY/AHN 12 DME and hold.	
---------------	--	--	--

AWOS-3 <b>124.525</b>	ATLANTA APP CON * <b>132.475 291.1</b>	GCO <b>121.725</b>	UNICOM <b>122.8 (CTAF)</b>
--------------------------	---	-----------------------	-------------------------------



CATEGORY	A	B	C	D
<b>C</b> CIRCLING	1240-1	551 (600-1)	1320-1 <sup>3</sup> / <sub>4</sub> 631 (700-1 <sup>3</sup> / <sub>4</sub> )	1480-2 <sup>1</sup> / <sub>2</sub> 791 (800-2 <sup>1</sup> / <sub>2</sub> )

SE-4, 05 SEP 2024 to 03 OCT 2024

SE-4, 05 SEP 2024 to 03 OCT 2024