

VOR/DME OTB <b>109.8</b> Chan <b>35</b>	APP CRS <b>015°</b>	Rwy Idg TDZE Apt Elev	<b>N/A</b> <b>N/A</b> <b>392</b>
---	------------------------	-----------------------------	--

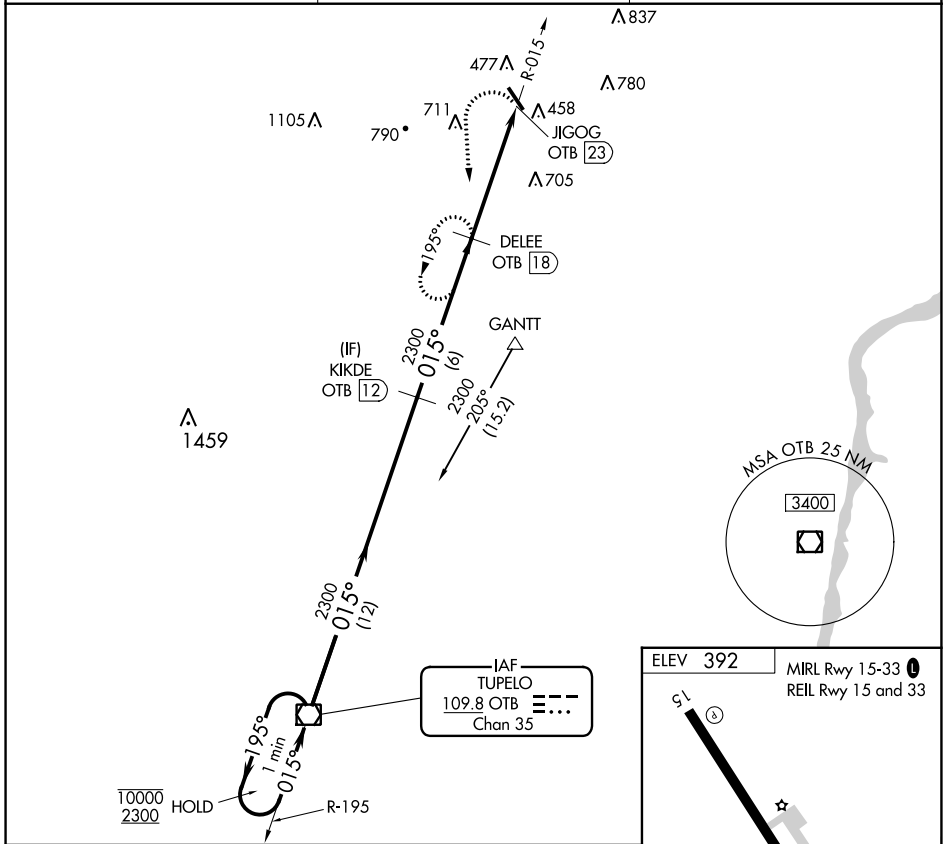
**VOR-A**  
BOONEVILLE/BALDWIN (8M1)

DME required. RNAV 1-GPS or RADAR required for procedure entry.

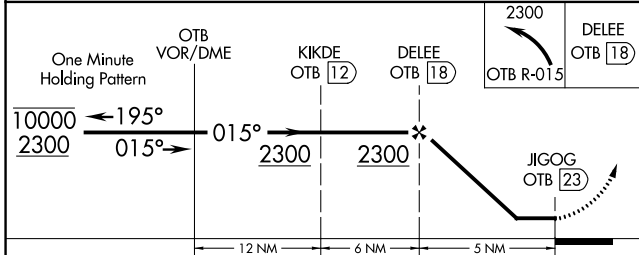
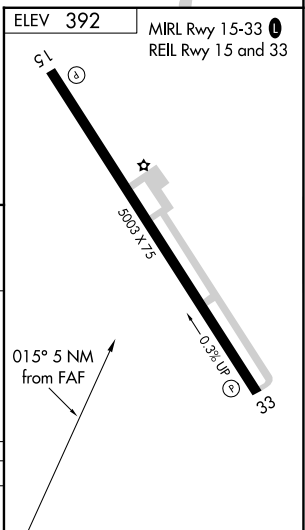
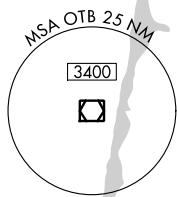
▼ Use Corinth altimeter setting, when not received, use Tupelo altimeter setting and  
▲ NA increase all MDA 20 feet.

MISSED APPROACH: Climbing left turn to 2300 on OTB VOR/DME R-015 to DELEE/OTB 18 DME and hold.

CRX AWOS-3PT <b>118.675</b>	MEMPHIS CENTER <b>135.9 273.55</b>	UNICOM <b>122.8 (CTAF) 0</b>
--------------------------------	---------------------------------------	---------------------------------



IAF  
TUPELO  
109.8 OTB  
Chan 35



CATEGORY	A	B	C	D
CIRCLING	1120-1 728 (800-1)	1120-1¼ 728 (800-1¼)	1180-2¼ 788 (800-2¼)	1340-3 948 (1000-3)

SC-4, 05 SEP 2024 to 03 OCT 2024

SC-4, 05 SEP 2024 to 03 OCT 2024