

WAAS CH 62817 W17A	APP CRS 174°	Rwy Idg 3700 TDZE 12 Apt Elev 12
--	------------------------	---

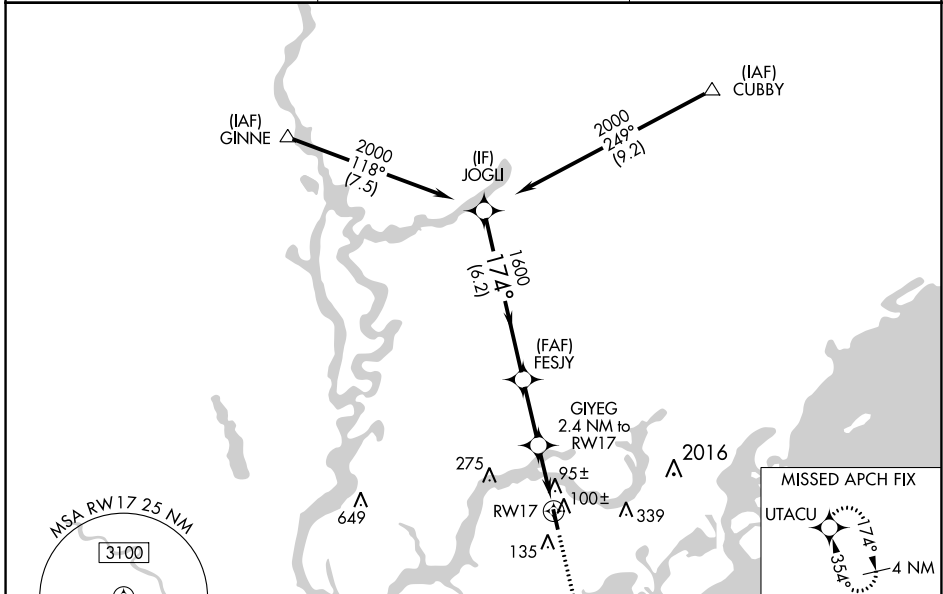
RNAV (GPS) RWY 17

MT PLEASANT RGNL-FAISON FLD (L.R.O)

⚠ For uncompensated Baro-VNAV systems, LNAV/VNAV NA below -15°C (5°F) or above 54°C (130°F). DME/DME RNP-0.3 NA. When local altimeter setting not received, use Charleston AFB/Intl altimeter setting and increase all DA/MDA 40 feet, increase LPV, LNAV/VNAV all Cats, and LNAV Cat C visibility ½ mile. Baro-VNAV NA with Charleston AFB/Intl altimeter setting. VDP NA with Charleston AFB/Intl altimeter setting. Helicopter visibility reduction below ¾ SM NA.

MISSED APPROACH: Climb to 3000 direct UTACU and hold, continue climb-in-hold to 3000.

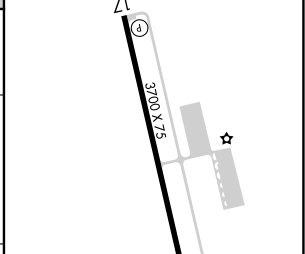
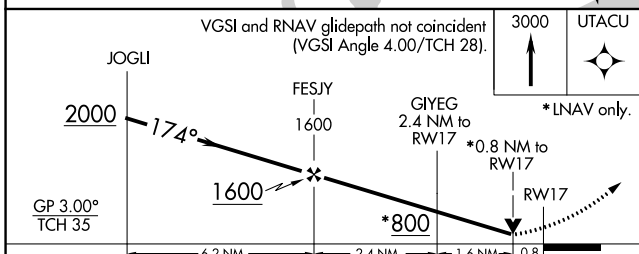
AWOS-3 118.625	CHARLESTON APP CON 121.275 379.925	UNICOM 122.7 (CTAF) 0
--------------------------	--	---------------------------------



SE-2, 05 SEP 2024 to 03 OCT 2024

SE-2, 05 SEP 2024 to 03 OCT 2024

ELEV 12	TDZE 12
---------	---------



CATEGORY	A	B	C	D
LPV DA	307-1	295 (300-1)		NA
LNAV/VNAV DA	389-1¼	377 (400-1¼)		NA
LNAV MDA	360-1	348 (400-1)		NA
CIRCLING	460-1 448 (500-1)	520-1 508 (600-1)	640-1¾ 628 (700-1¾)	NA

MRL Rwy 17-35 0