

|  |                        |                             |   |
|--|------------------------|-----------------------------|---|
| WAAS<br>CH <b>82419</b><br><b>W15A</b> | APP CRS<br><b>152°</b> | Rwy Idg<br>TDZE<br>Apt Elev | <b>5006</b><br><b>132</b><br><b>132</b> |
|--|------------------------|-----------------------------|---|

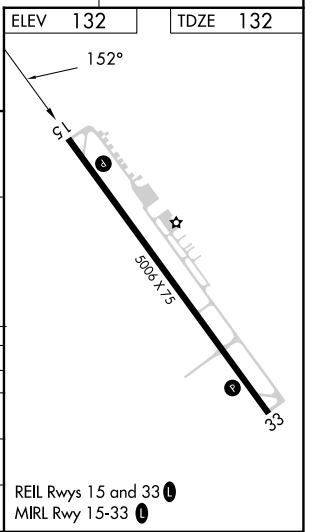
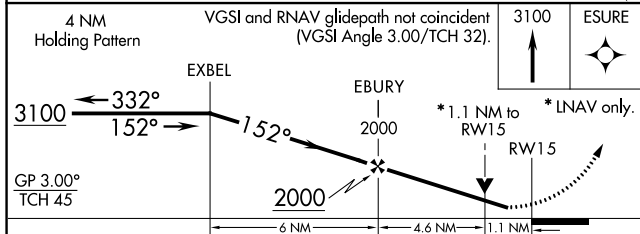
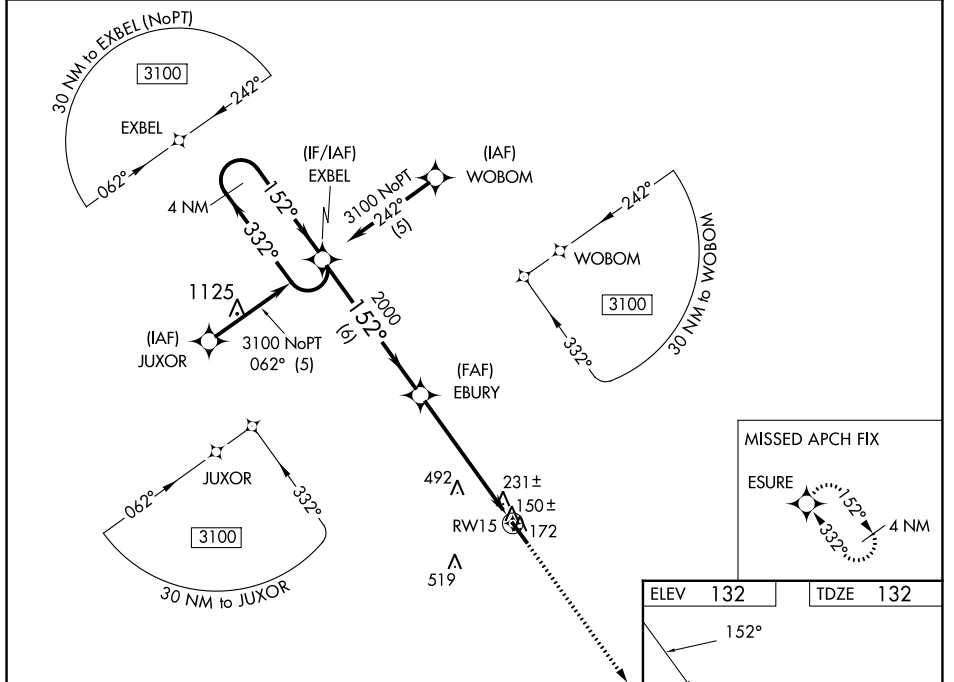
# RNAV (GPS) RWY 15

CURTIS L BROWN JR FLD (EYF)

**⚠** DME/DME RNP-0.3 NA. Visibility reduction by helicopters NA. When local altimeter setting not received, use Fayetteville, NC altimeter setting; increase LPV DA to 454 feet, LNAV/VNAV DA to 601 feet, and all MDAs 80 feet, and increase LPV and LNAV/VNAV all Cats visibility ¼ SM, LNAV Cats C and D and Circling Cats C and D visibility ½ SM. Baro-VNAV and VDP NA when using Fayetteville, NC altimeter setting. For uncompensated Baro-VNAV systems, LNAV/VNAV NA below -1.5°C (5°F) or above 48°C (118°F).

**⚠** MISSED APPROACH: Climb to 3100 direct ESURE and hold, continue climb-in-hold to 3100.

|                           |   |                                 |
|---------------------------|---|---------------------------------|
| AWOS-3P<br><b>119.475</b> | FAYETTEVILLE APP CON<br><b>133.0 290.25</b> | UNICOM<br><b>122.8 (CTAF) 0</b> |
|---------------------------|---|---------------------------------|



| CATEGORY     | A     | B           | C                      | D                      |
|--------------|-------|-------------|------------------------|------------------------|
| LPV DA       |       | 382-1       | 250 (300-1)            |                        |
| LNAV/VNAV DA |       | 529-1½      | 397 (400-1½)           |                        |
| LNAV MDA     | 660-1 | 528 (600-1) | 660-1½<br>528 (600-1½) | 660-1¾<br>528 (600-1¾) |
| CIRCLING     | 660-1 | 528 (600-1) | 880-2¼<br>748 (800-2¼) | 880-2½<br>748 (800-2½) |

SE-2, 05 SEP 2024 to 03 OCT 2024

SE-2, 05 SEP 2024 to 03 OCT 2024