

APP CRS <b>101°</b>	Rwy Idg <b>3712</b>
	TDZE <b>679</b>
	Apt Elev <b>686</b>

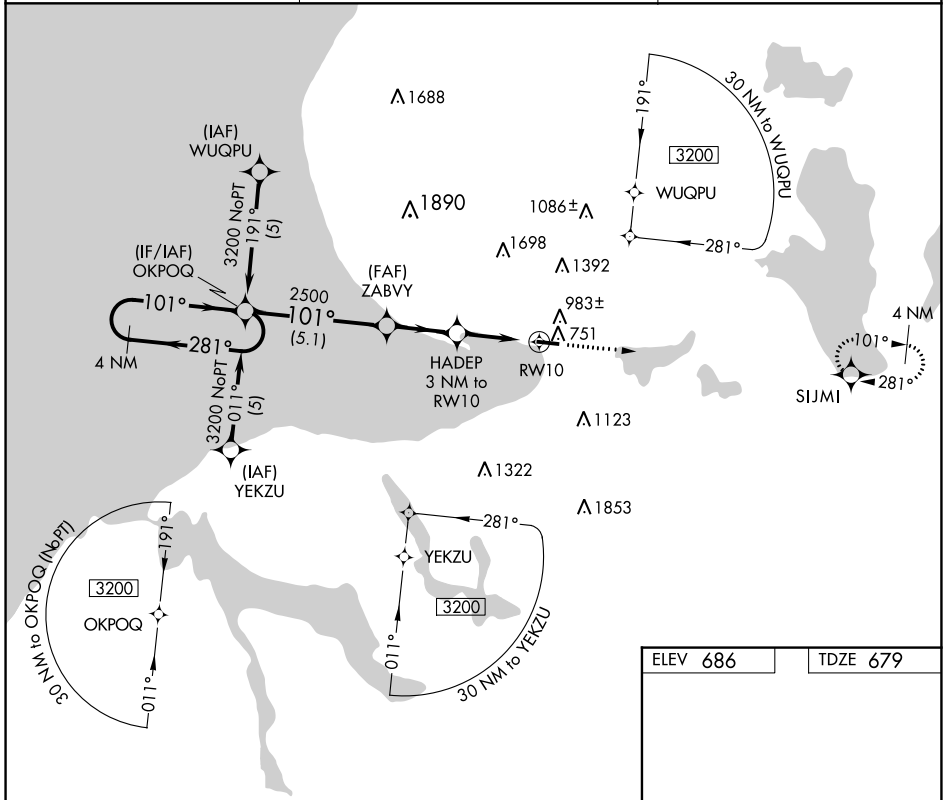
# RNAV (GPS) RWY 10

HARBOR SPRINGS (MGN)

**⚠** DME/DME RNP-0.3 NA. When local altimeter setting not received, use  
**⚠** Pellston altimeter setting and increase all MDAs 40 feet. Procedure NA  
 at night. Helicopter visibility reduction below 1 SM NA.

MISSED APPROACH: Climb to 3500 direct SIJMI and hold.

AWOS-3P <b>119.925</b>	MINNEAPOLIS CENTER <b>134.6 354.05</b>	UNICOM <b>122.8</b> (CTAF) <b>0</b>
---------------------------	---	--



EC-1, 05 SEP 2024 to 03 OCT 2024

EC-1, 05 SEP 2024 to 03 OCT 2024

