



APP CRS	Rwy Idg	2697
320°	TDZE	763
	Apt Elev	763

RNAV (GPS) RWY 32

EPHRAIM/GIBRALTAR (3D2)

RNP APCH - GPS.

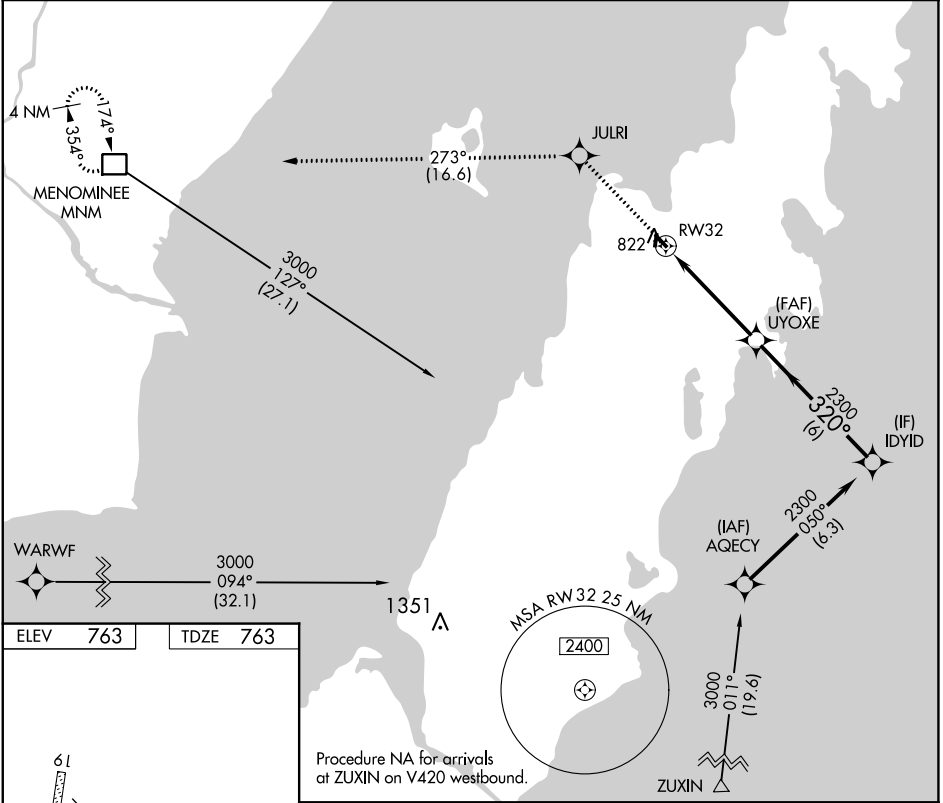
MISSED APPROACH: Climb to 3000 direct JULRI and on track 273° to MNM DME and hold.

 Procedure NA at night. Rwy 32 helicopter visibility reduction below 3/4 SM NA.


AWOS-3PT
124.175

GREEN BAY APP CON★
120.3 338.2

UNICOM
123.0 (CTAF) 0






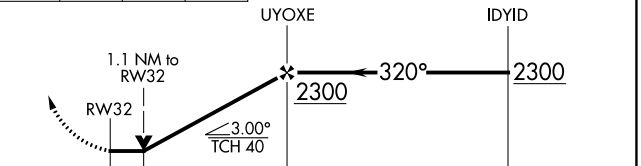
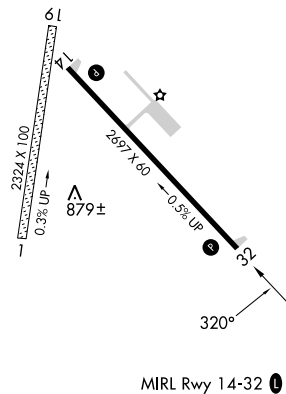
EC-3, 05 SEP 2024 to 03 OCT 2024

EC-3, 05 SEP 2024 to 03 OCT 2024

ELEV	763	TDZE	763
------	------------	------	------------

Procedure NA for arrivals at ZUXIN on V420 westbound.

3000	JULRI	tr 273°	MNM	VGSI and descent angles not coincident (VGSI Angle 3.00/TCH 25).
				



CATEGORY	A	B	C	D
LNAV MDA	1120-1	357 (400-1)		NA