

WAAS CH <b>81937</b> <b>W34A</b>	APP CRS <b>346°</b>	Rwy Idg TDZE Apt Elev	<b>3301</b> <b>906</b> <b>906</b>
--	------------------------	-----------------------------	---

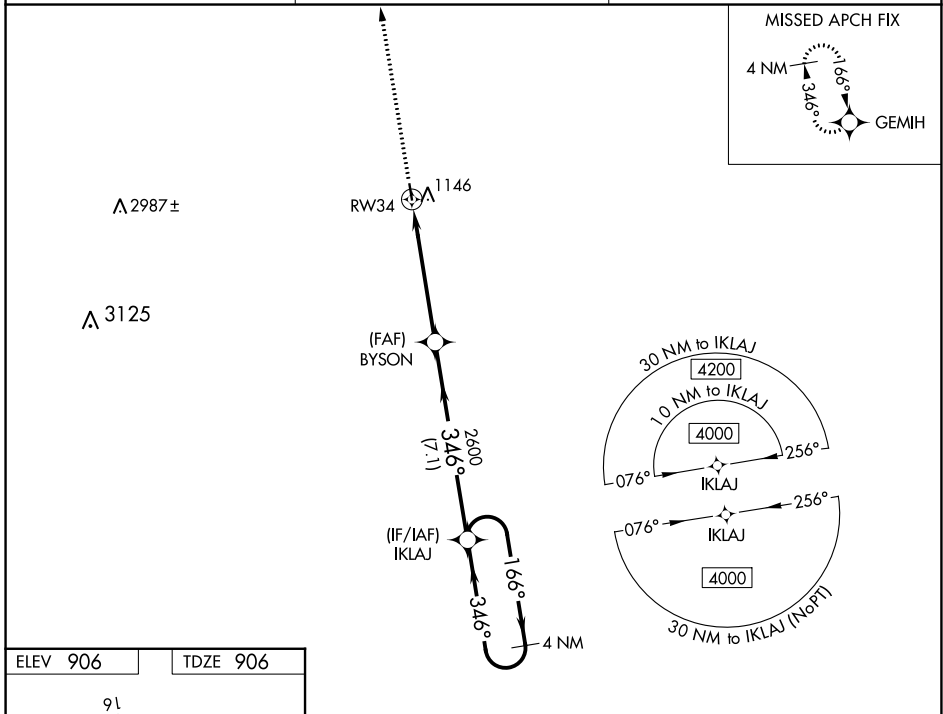
# RNAV (GPS) RWY 34

HILLSBORO MUNI (3H4)

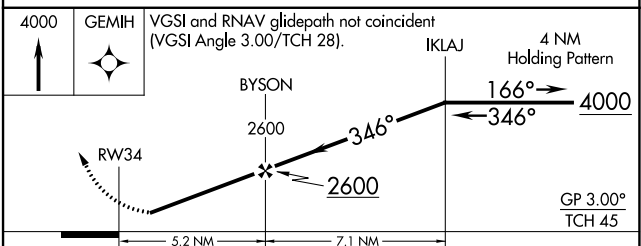
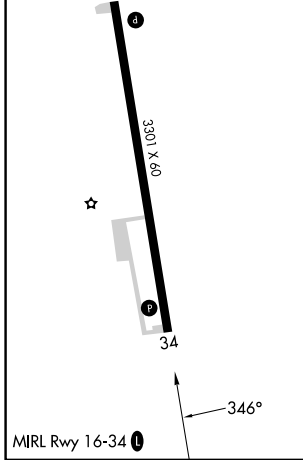
**▼** Use Fargo altimeter setting. DME/DME RNP-0.3 NA.  
**▲ NA** Night Landing: Rwy 34 NA. Helicopter visibility reduction below 1 SM NA.

MISSED APPROACH: Climb to 4000 direct GEMIH and hold.

FAR ASOS <b>124.5 379.2</b>	FARGO APP CON <b>120.4 377.15</b>	CTAF <b>122.90</b>
--------------------------------	--------------------------------------	-----------------------



ELEV 906	TDZE 906
----------	----------



CATEGORY	A	B	C	D
LPV DA	1222-1	316 (400-1)		NA
LNAV/VNAV DA	1362-1½	456 (500-1½)		NA
LNAV MDA	1480-1	574 (600-1)	1480-1½ 574 (600-1½)	NA
<b>C</b> CIRCLING	1520-1	614 (700-1)	1520-1¾ 614 (700-1¾)	NA

NC-1, 05 SEP 2024 to 03 OCT 2024

NC-1, 05 SEP 2024 to 03 OCT 2024