

WAAS CH <b>77725</b> <b>W18A</b>	APP CRS <b>178°</b>	Rwy Idg TDZE Apt Elev	<b>3807</b> <b>282</b> <b>282</b>
--	------------------------	-----------------------------	---

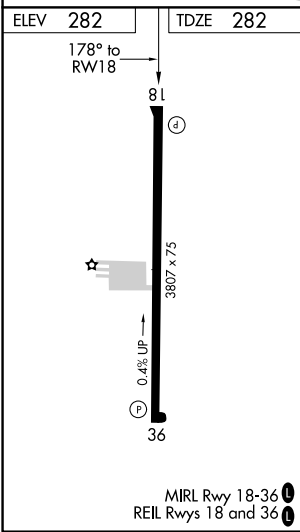
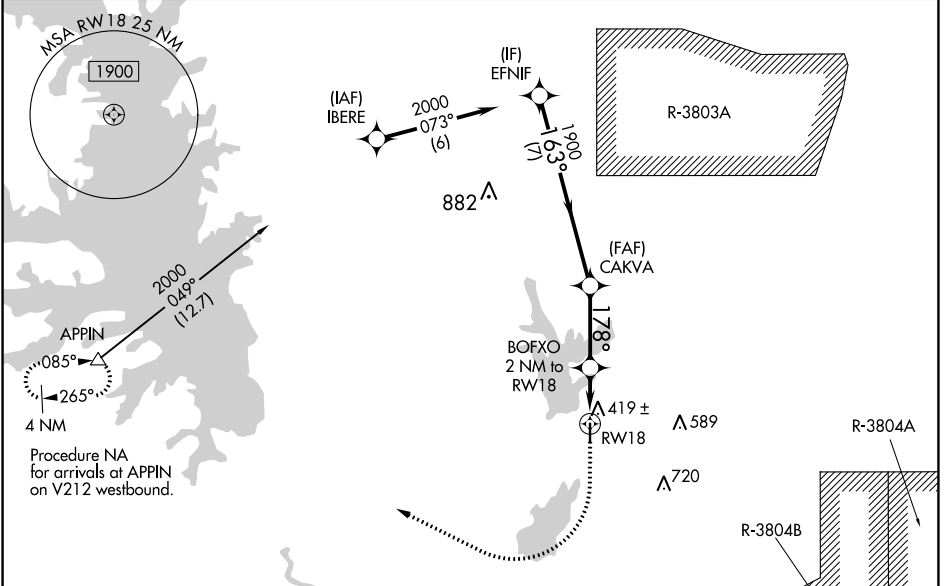
# RNAV (GPS) RWY 18

LEESVILLE (L39)

**NA** When VGSI inop, Circling Rwy 36 NA at night. Baro-VNAV NA. When VGSI inop, Straight-in/Circling Rwy 18 procedure NA at night. DME/DME RNP-0.3 NA. Visibility reduction by helicopters NA. Use Fort Polk altimeter setting; when not received, use De Ridder altimeter setting and increase all DA 26 feet and all MDA 40 feet; increase LNAV/VNAV all Cats visibility and LNAV Cat C visibility 1/8 SM, and Circling Cat C visibility 1/4 SM.

MISSED APPROACH: Climb to 800 then climbing right turn to 4000 direct APPIN and hold.

KPOE ATIS <b>134.85 282.2</b>	POLK APP CON <b>123.7 261.3</b>	UNICOM <b>122.8</b> (CTAF) <b>U</b>
----------------------------------	------------------------------------	--



**RADAR REQUIRED**

ELEV 282	TDZE 282		
800	4000		
APPIN	△		
*LNAV only.			
BOFXO 2 NM to RWY 18	CAKVA		
RWY 18	EFNIF		
2 NM	2.9 NM	7 NM	2000
178°	163°	1900	GP 3.00° TCH 50
960*			
81			
36			
MIRL Rwy 18-36 <b>U</b>			
REIL Rwy 18 and 36 <b>U</b>			

CATEGORY	A	B	C	D
LPV DA	564-1	282 (300-1)		NA
LNAV/VNAV DA	622-1 1/8	340 (400-1 1/8)		NA
LNAV MDA	720-1	438 (500-1)	720-1 1/4 438 (500-1 1/4)	NA
CIRCLING	760-1 478 (500-1)	800-1 518 (600-1)	1000-2 718 (800-2)	NA

SC-4, 05 SEP 2024 to 03 OCT 2024

SC-4, 05 SEP 2024 to 03 OCT 2024