

APP CRS <b>160°</b>	Rwy Idg TDZE Apt Elev	<b>6003</b> <b>2377</b> <b>2377</b>
------------------------	-----------------------------	---

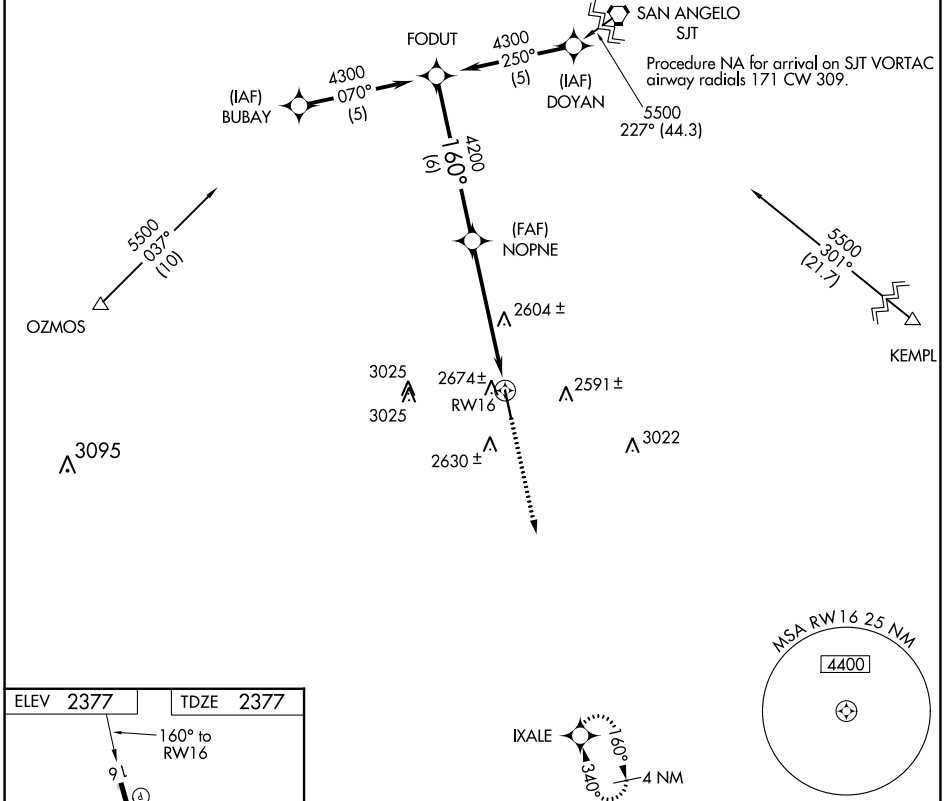
# RNAV (GPS) RWY 16

OZONA MUNI (OZA)

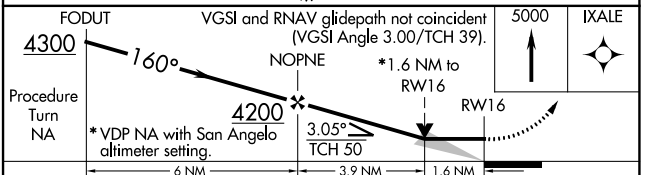
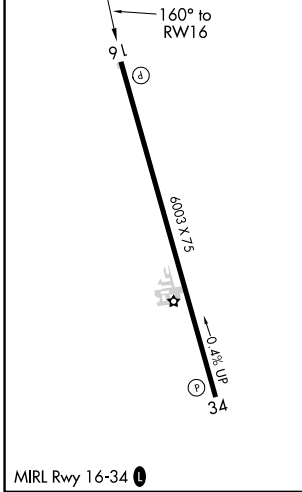
**⚠** GPS or RNP-0.3 required. DME/DME RNP-0.3 NA. Procedure NA at night.  
**⚠** NA Obtain local altimeter on CTAF; when not received, use San Angelo altimeter setting.  
 Rwy 16 helicopter visibility reduction below ¼ SM NA.

**MISSED APPROACH:** Climb to 5000 direct IXALE WP and hold.

AWOS-3PT <b>118.425</b>	HOUSTON CENTER <b>125.75 346.4</b>	UNICOM <b>122.8 (CTAF) 0</b>
----------------------------	---------------------------------------	---------------------------------



ELEV 2377	TDZE 2377
-----------	-----------



CATEGORY	A	B	C	D
LNAV MDA	2940-1¼	563 (600-1¼)	2940-1½ 563 (600-1½)	NA
CIRCLING	2980-1¼	603 (700-1¼)	2980-1¾ 603 (700-1¾)	NA
<b>SAN ANGELO ALTIMETER SETTING MINIMUMS</b>				
LNAV MDA	3180-1¼	803 (800-1¼)	3180-2¼ 803 (800-2¼)	NA
CIRCLING	3220-1¼	843 (900-1¼)	3220-2½ 843 (900-2½)	NA

SC-3, 05 SEP 2024 to 03 OCT 2024

SC-3, 05 SEP 2024 to 03 OCT 2024