

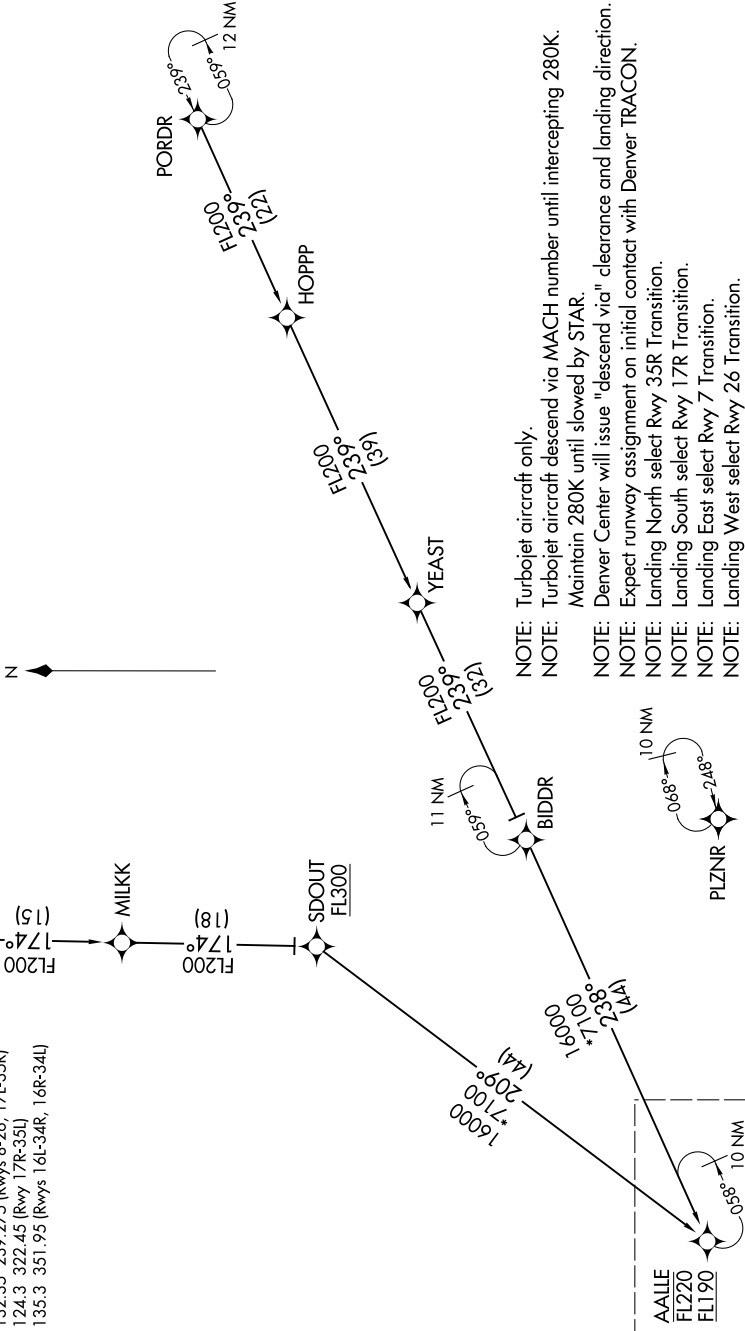
AALLE THREE ARRIVAL (RNAV) Transition Routes

SW-1, 05 SEP 2024 to 03 OCT 2024

NYTRO TRANSITION (NYTRO.AALLE3)
PORDR TRANSITION (PORDR.AALLE3)

RNAV 1 - DME/DME/IRU or GPS
RADAR required for non-GPS equipped aircraft

DENVER APP CON
124.95 346.4
D-ATIS ARR
125.6 379.9
DENVER TOWER
128.75 273.55 (Rwy 7-25)
132.35 239.275 (Rwys 8-26, 17L-35R)
124.3 322.45 (Rwy 17R-35L)
135.3 351.95 (Rwys 16L-34R, 16R-34I)



NOTE: Turbojet aircraft only.
NOTE: Turbojet aircraft descend via MACH number until intercepting 280K. Maintain 280K until slowed by STAR.
NOTE: Denver Center will issue "descend via" clearance and landing direction.
NOTE: Expect runway assignment on initial contact with Denver TRACON.
NOTE: Landing North select Rwy 35R Transition.
NOTE: Landing South select Rwy 17R Transition.
NOTE: Landing East select Rwy 7 Transition.
NOTE: Landing West select Rwy 26 Transition.

NOTE: Chart not to scale.

(CONTINUED ON FOLLOWING PAGE)

See following page for arrival routes

AALLE THREE ARRIVAL (RNAV) Transition Routes