

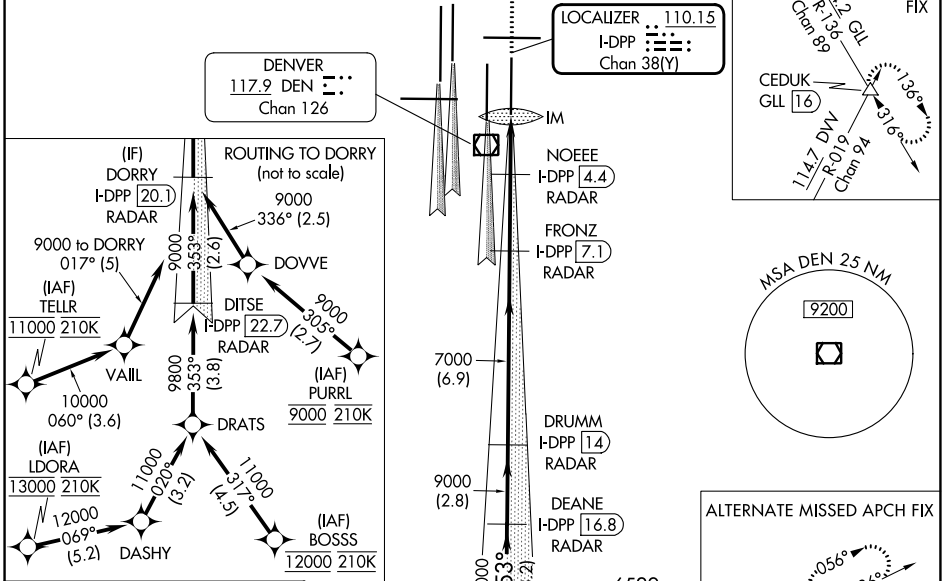
LOC/DME I-DPP <b>110.15</b> Chan <b>38(Y)</b>	APP CRS <b>353°</b>	Rwy Idg <b>12000</b> TDZE <b>5370</b> Apt Elev <b>5434</b>
---	------------------------	--

# ILS or LOC RWY 35R

DENVER INTL (DEN)

<p><b>▽</b> S-LOC 35R DME or RADAR required. Simultaneous approach authorized with Rwy 34L, Rwy 34R, and Rwy 35L.</p>	ALSF-2 <b>(A)</b>	MISSED APPROACH: Climb to 5800 then climbing right turn to 10000 on heading 048° and on GLL VORTAC R-136 to CEDUK/GLL 16 DME and hold.			
D-ATIS <b>125.6 379.9</b> (ARR) <b>134.025</b> (DEP)	DENVER APP CON <b>119.3 307.3</b> (N) <b>120.35 379.3</b> (S)	DENVER TOWER <b>132.35 239.275</b>	GND CON <b>121.35 379.175</b> (W) <b>121.85 377.1</b> (E)	CLNC DEL <b>118.75</b>	CPDLC

## RADAR or GPS REQUIRED

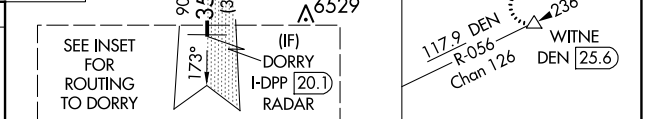
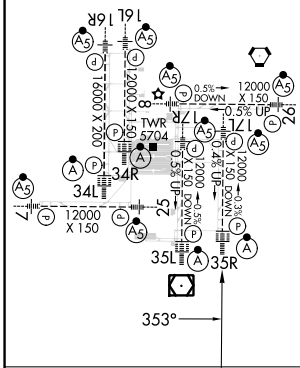


SW-1, 05 SEP 2024 to 03 OCT 2024

SW-1, 05 SEP 2024 to 03 OCT 2024

ELEV 5434	<b>D</b>	TDZE 5370
-----------	----------	-----------

HIRL all Rwy's  
TDZ/CL Rwy's 7, 16L, 16R, 17R, 26, 34L, 34R, 35L, 35R



VGSi and ILS glidepath not coincident (VGSi Angle 3.00/TCH 66).		5800	10000	GLL	CEDUK
		↑	hdg 048°	R-136	△
		* LOC only			
DORRY I-DPP <b>(20.1)</b> RADAR	DEANE I-DPP <b>(16.8)</b> RADAR	DRUMM I-DPP <b>(14)</b> RADAR	FRONZ I-DPP <b>(7.1)</b> RADAR	NOEEE I-DPP <b>(4.4)</b> RADAR	
9000 → 353° → 9000		7000 → 316° → 7000		7000 → 048° → 7000	
GS 3.00° TCH 59		*6120		IM	
→ 3.2 NM		→ 2.8 NM		→ 6.9 NM	
→ 2.7 NM		→ 1.3 NM		→ 0.9 NM	
→ 0.1 NM					
CATEGORY	A	B	C	D	
S-ILS 35R	5570/18 200 (200-½)				
S-LOC 35R	5740/24 370 (400-½)		5740/35 370 (400-⅝)		

FAF to MAP 4.9 NM					
Knots	60	90	120	150	180
Min:Sec	4:54	3:16	2:27	1:58	1:38