

APP CRS <b>173°</b>	Rwy Idg <b>12000</b>
	TDZE <b>5357</b>
	Apt Elev <b>5434</b>

# RNAV (RNP) Z RWY 16L

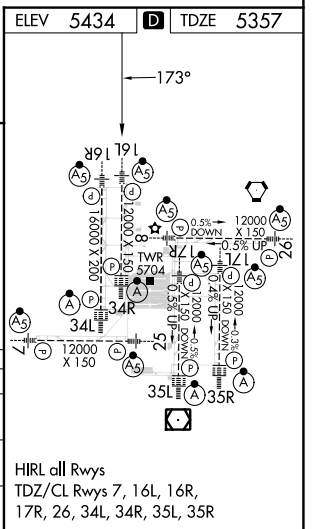
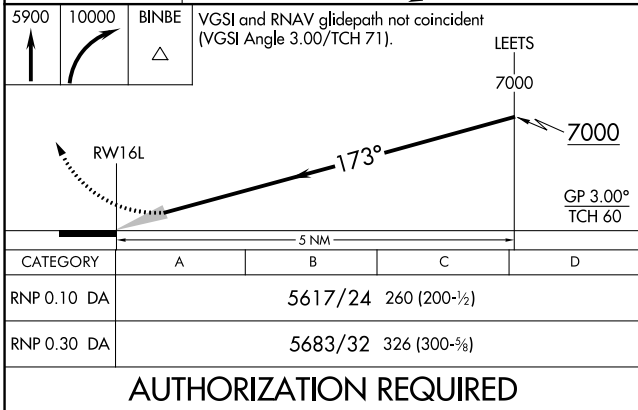
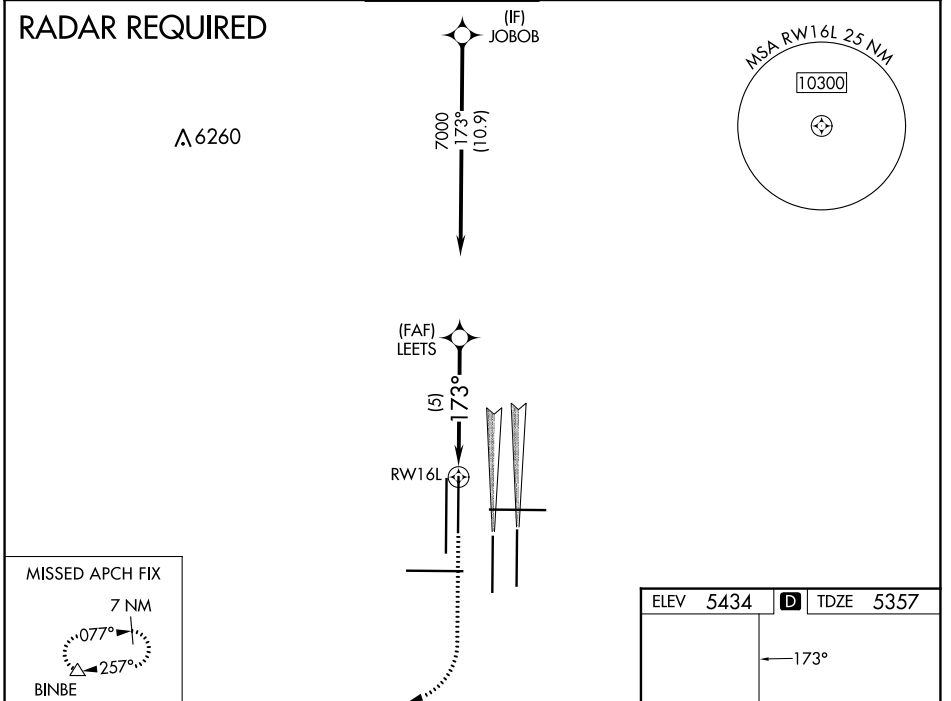
DENVER INTL (DEN)

**▼** For uncompensated Baro-VNAV systems, procedure NA below -25°C (-13°F) or above 45°C (114°F). GPS required. For inoperative MALSR, increase RNP 0.10 all Cats visibility to RVR 4000 and RNP 0.30 all Cats visibility to RVR 5000. Simultaneous approach authorized. Use of FD or AP providing RNAV track guidance required during simultaneous operations.

**MALSR**

**MISSED APPROACH:** Climb to 5900 then climbing right turn to 10000 direct BINBE and hold, continue climb-in-hold to 10000.

D-ATIS <b>125.6 379.9 (ARR)</b> <b>134.025 (DEP)</b>	DENVER APP CON <b>119.3 307.3 (N)</b> <b>120.35 379.3 (S)</b>	DENVER TOWER <b>135.3 351.95</b>	GND CON <b>121.35 379.175 (W)</b> <b>121.85 377.1 (E)</b>	CLNC DEL <b>118.75</b>	CPDLC
--	---	-------------------------------------	---	---------------------------	-------



SW-1, 05 SEP 2024 to 03 OCT 2024

SW-1, 05 SEP 2024 to 03 OCT 2024