

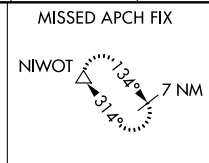
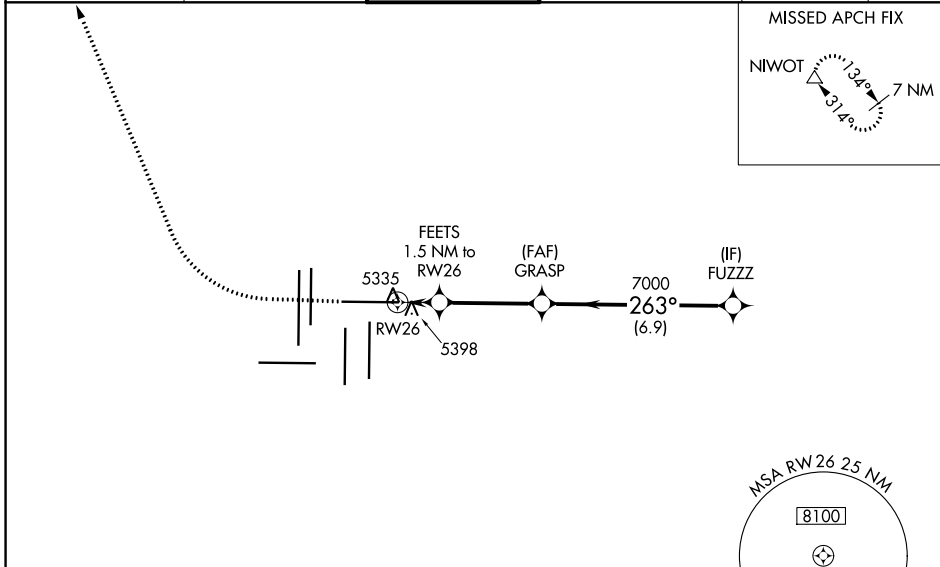
WAAS CH 58128 W26A	APP CRS 263°	Rwy Idg 12000 TDZE 5309 Apt Elev 5434
--	------------------------	--

RNAV (GPS) Y RWY 26

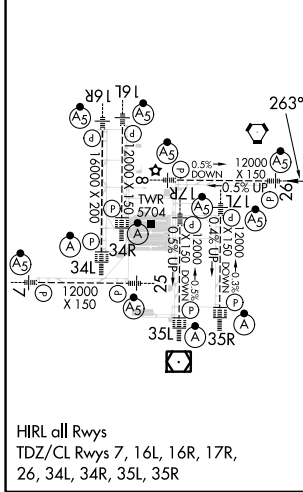
DENVER INTL (DEN)

RNP APCH. RADAR required.	MALSR 	MISSED APPROACH: Climb to 6000 then climbing right turn to 11000 direct NIWOT and hold.
<p>▼ For uncompensated Baro-VNAV systems, LNAV/VNAV NA below -25°C or above 46°C. Simultaneous approach authorized with Rwy 25. For inoperative ALS, increase LNAV/VNAV all Cats visibility to RVR 4000 and LNAV Cat C/D visibility to RVR 5500. LNAV procedure NA during simultaneous operations. Use of FD or AP providing RNAV track guidance required during simultaneous operations.</p>		

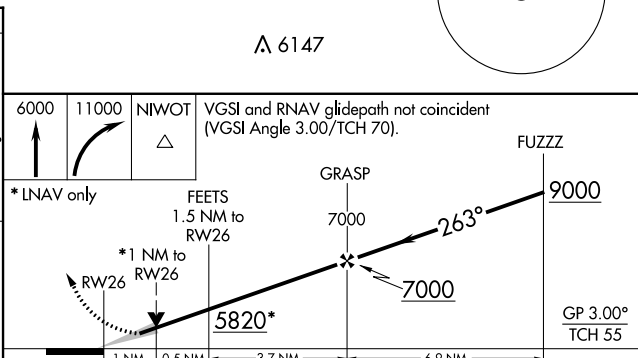
D-ATIS 125.6 379.9 (ARR) 134.025 (DEP)	DENVER APP CON 119.3 307.3 (N) 120.35 379.3 (S)	DENVER TOWER 132.35 239.275	GND CON 121.35 379.175 (W) 121.85 377.1 (E)	CLNC DEL 118.75	CPDLC
--	---	---------------------------------------	---	---------------------------	-------



ELEV 5434	D	TDZE 5309
-----------	----------	-----------



HIRL all Rwys
TDZ/CL Rwys 7, 16L, 16R, 17R,
26, 34L, 34R, 35L, 35R



CATEGORY	A	B	C	D
LPV DA		5509/18	200 (100-½)	
LNAV/VNAV DA		5559/24	250 (200-½)	
LNAV MDA	5660/24	351 (300-½)	5660/30	351 (300-⅝)

SW-1, 05 SEP 2024 to 03 OCT 2024

SW-1, 05 SEP 2024 to 03 OCT 2024