

VORTAC TYI <b>117.8</b> Chan <b>125</b>	APP CRS <b>291°</b>	Rwy Idg <b>3999</b> TDZE <b>50</b> Apt Elev <b>53</b>
---	------------------------	---

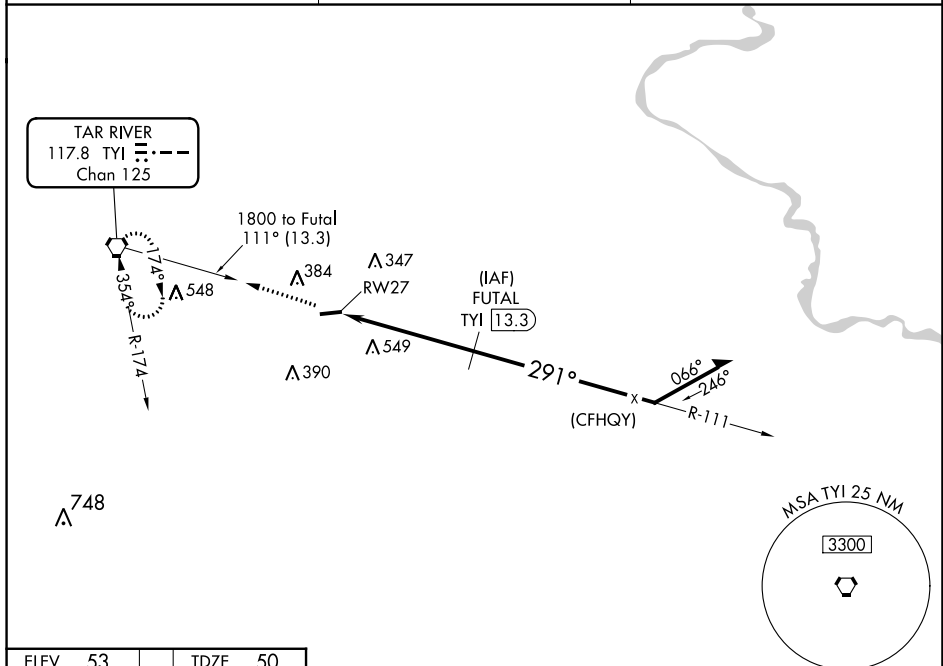
# VOR/DME or GPS RWY 27

TARBORO-EDGEcombe (E/T/C)

**▼** Use Rocky Mount altimeter setting; when not received  
**▲** NA use Raleigh-Durham altimeter setting minimums.

MISSED APPROACH: Climb to 2000 direct TYI VORTAC and hold.

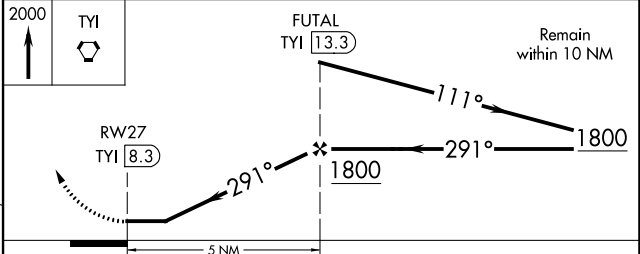
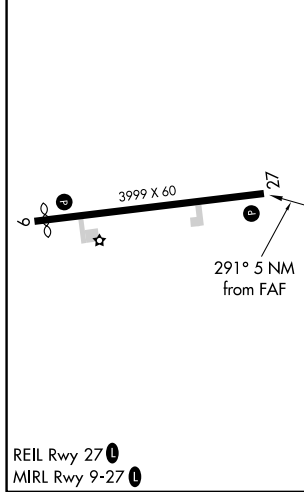
AWOS-3P <b>119.575</b>	WASHINGTON CENTER <b>123.85 279.65</b>	CTAF <b>122.9 0</b>
---------------------------	---	------------------------



SE-2, 05 SEP 2024 to 03 OCT 2024

SE-2, 05 SEP 2024 to 03 OCT 2024

ELEV 53	TDZE 50
---------	---------



CATEGORY	A	B	C	D
S-27	860-1 810 (900-1)	860-1¼ 810 (900-1¼)	860-2¼ 810 (900-2¼)	860-2½ 810 (900-2½)
CIRCLING	860-1 807 (900-1)	860-1¼ 807 (900-1¼)	860-2¼ 807 (900-2¼)	920-2¾ 867 (900-2¾)
RALEIGH-DURHAM ALTIMETER SETTING MINIMUMS				
S-27	1080-1¼ 1030 (1100-1¼)	1080-1½ 1030 (1100-1½)	1080-3	1030 (1100-3)
CIRCLING	1080-1¼ 1027 (1100-1¼)	1080-1½ 1027 (1100-1½)	1080-3	1140-3 1087 (1100-3)