

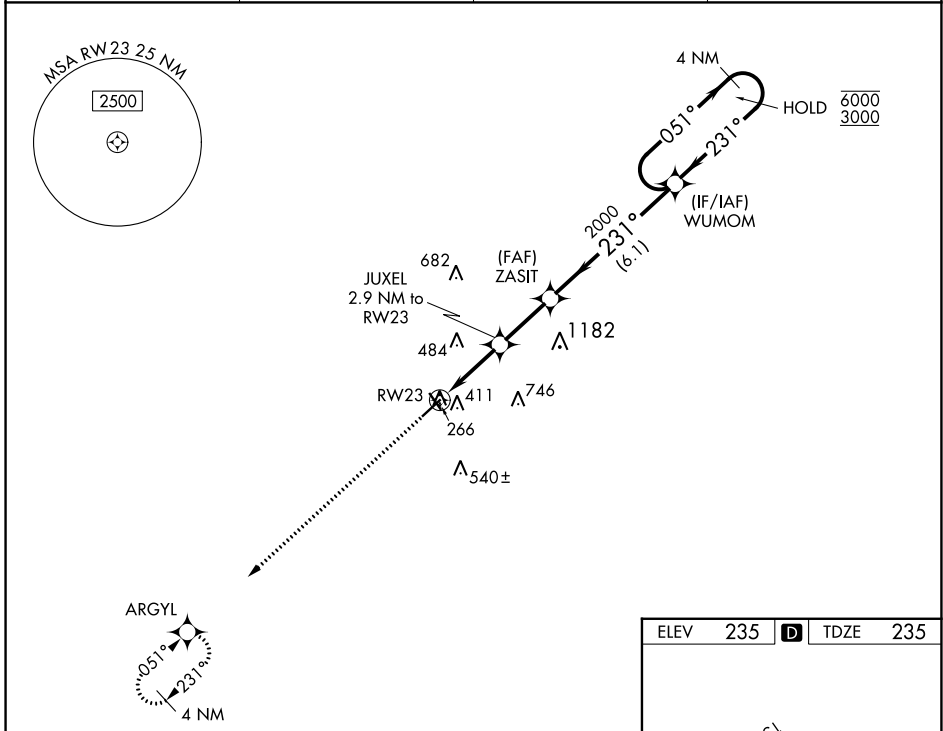
WAAS CH <b>81833</b> <b>W23A</b>	APP CRS <b>231°</b>	Rwy Idg <b>5501</b> TDZE <b>235</b> Apt Elev <b>235</b>
--	------------------------	---

# RNAV (GPS) RWY 23

COOK COUNTY (15J)

RNP APCH - GPS.	<p>Procedure NA at night. Rwy 23 helicopter visibility reduction below 1 SM NA. Baro-VNAV NA. Use Moultrie Muni altimeter setting.</p>	MISSED APPROACH: Climb to 3000 direct ARGYL and hold, continue climb-in-hold to 3000.
-----------------	--	---

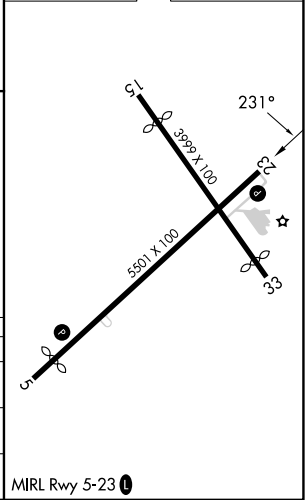
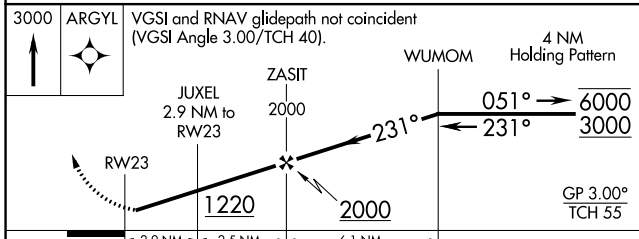
AWOS-3PT <b>118.025</b>	MGR AWOS-3PT <b>118.925</b>	VALDOSTA APP CON★ <b>126.6 285.6</b>	UNICOM <b>122.8 (CTAF)</b>
----------------------------	--------------------------------	---	-------------------------------



SE-4, 05 SEP 2024 to 03 OCT 2024

SE-4, 05 SEP 2024 to 03 OCT 2024

ELEV	235	D	TDZE	235
------	-----	---	------	-----



CATEGORY	A	B	C	D
LPV DA	595-1	360 (400-1)		
LNAV/VNAV DA	694-1 <sup>3</sup> / <sub>8</sub>	459 (500-1 <sup>3</sup> / <sub>8</sub> )		
LNAV MDA	700-1	465 (500-1)	700-1 <sup>3</sup> / <sub>8</sub>	465 (500-1 <sup>3</sup> / <sub>8</sub> )

MIRL Rwy 5-23