

WAAS CH 42506 W05A	APP CRS 051°	Rwy Idg TDZE Apt Elev	5000 235 235
--	------------------------	-----------------------------	---

RNAV (GPS) RWY 5

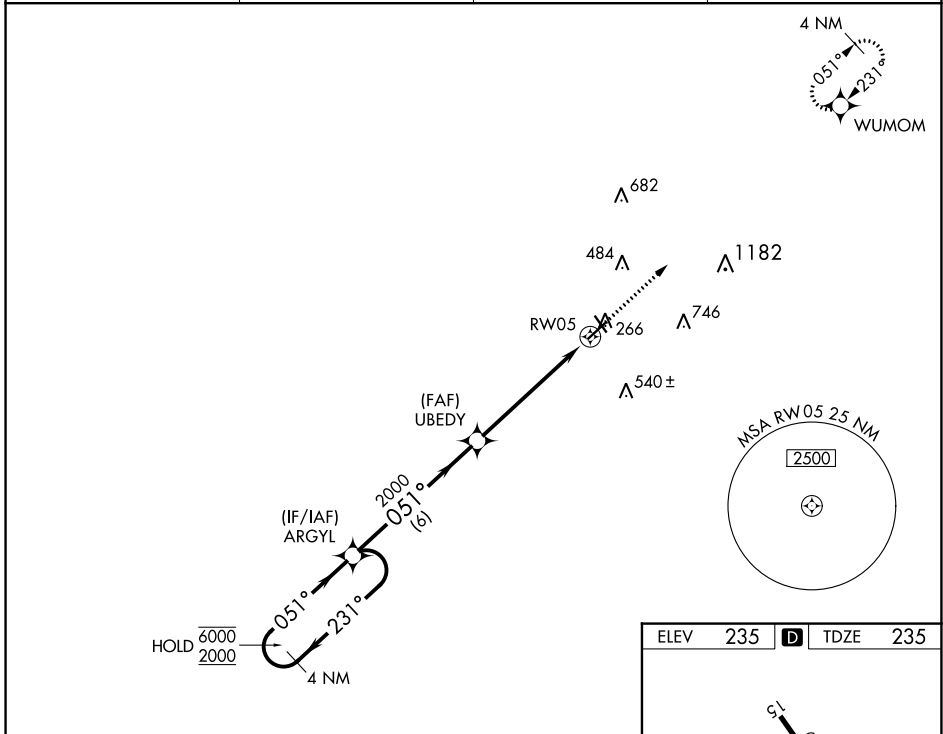
COOK COUNTY (15J)

RNP APCH - GPS.

- ▼ Procedure NA at night.
- ▲ NA Rwy 5 helicopter visibility reduction below 1 SM NA.
- Baro-VNAV NA.
- Use Moultrie altimeter setting.

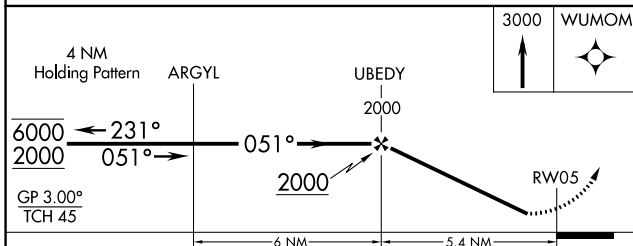
MISSED APPROACH: Climb to 3000 direct WUMOM and hold, continue climb-in-hold to 3000.

AWOS-3PT 118.025	MGR AWOS-3PT 118.925	VALDOSTA APP CON★ 126.6 285.6	UNICOM 122.8 (CTAF)
----------------------------	--------------------------------	---	-------------------------------

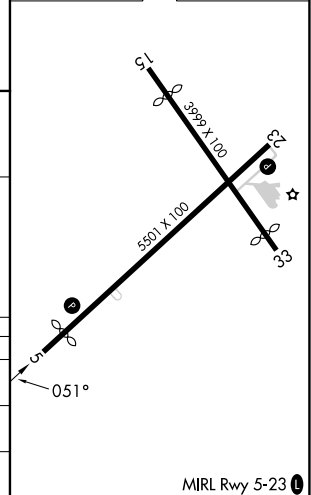


SE-4, 05 SEP 2024 to 03 OCT 2024

SE-4, 05 SEP 2024 to 03 OCT 2024



ELEV	235		TDZE	235
------	-----	--	------	-----



CATEGORY	A	B	C	D
LPV DA		534-1	299 (300-1)	
LNAV/VNAV DA		595-1	360 (400-1)	
LNAV MDA	740-1	505 (600-1)	740-1 ³ / ₈	505 (600-1 ³ / ₈)

MIRL Rwy 5-23