

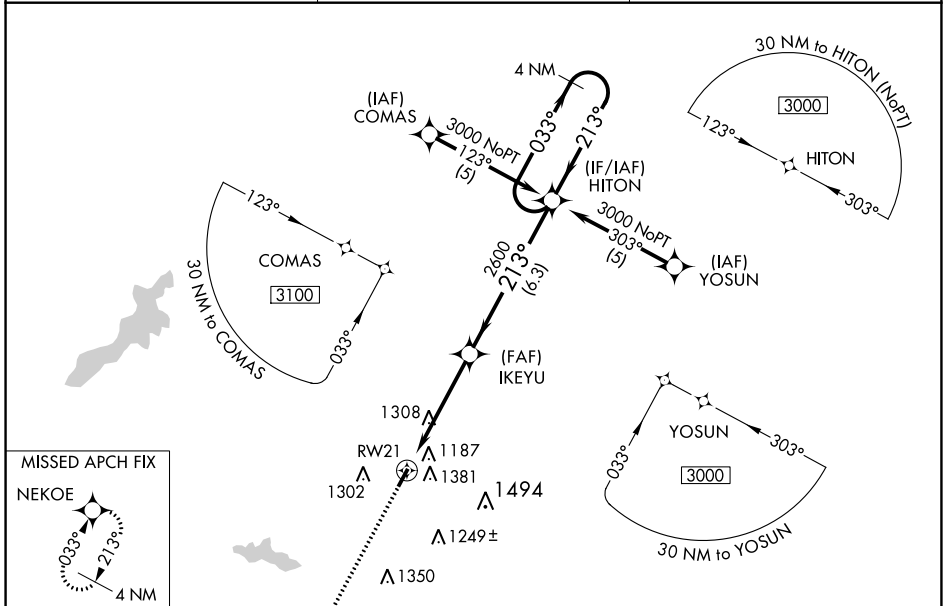
WAAS CH 99608 W21A	APP CRS 213°	Rwy Idg TDZE Apt Elev	3579 1033 1033
--	------------------------	-----------------------------	---

RNAV (GPS) RWY 21

CLINTON FLD (I66)

RNP APCH.	Baro-VNAV NA when using Wilmington Air Park altimeter setting. For uncompensated Baro-VNAV systems, LNAV/VNAV NA below -17°C or above 54°C. When local altimeter setting not received, use Wilmington Air Park altimeter setting and increase all DA/MDA 20 feet. Rwy 21 helicopter visibility reduction below ¾ SM NA.	MISSED APPROACH: Climb to 3000 direct NEKOE and hold.
-----------	---	--

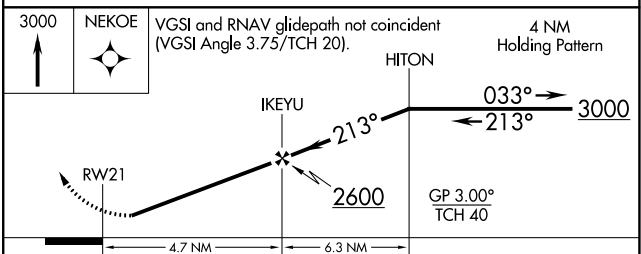
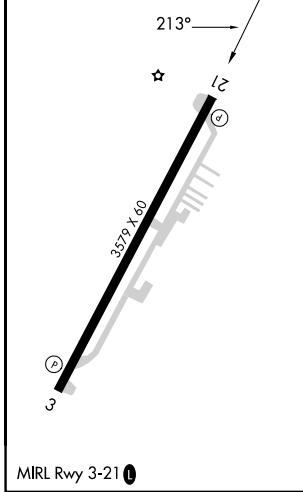
AWOS-3 124.175	COLUMBUS APP CON 118.85 269.275	UNICOM 122.725 (CTAF) ①
--------------------------	---	-----------------------------------



EC-2, 05 SEP 2024 to 03 OCT 2024

EC-2, 05 SEP 2024 to 03 OCT 2024

ELEV 1033	TDZE 1033
-----------	-----------



CATEGORY	A	B	C	D
LPV DA	1491-1 ¾	458 (500-1¾)		NA
LNAV/VNAV DA	1589-2	556 (600-2)		NA
LNAV MDA	1640-1	607 (700-1)	1640-1¾ 607 (700-1¾)	NA
CIRCLING	1740-1	707 (800-1)	1740-2 707 (800-2)	NA