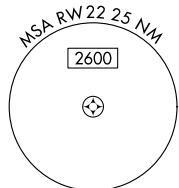


APP CRS	Rwy Idg	N/A
216°	TDZE	N/A
	Apt Elev	421

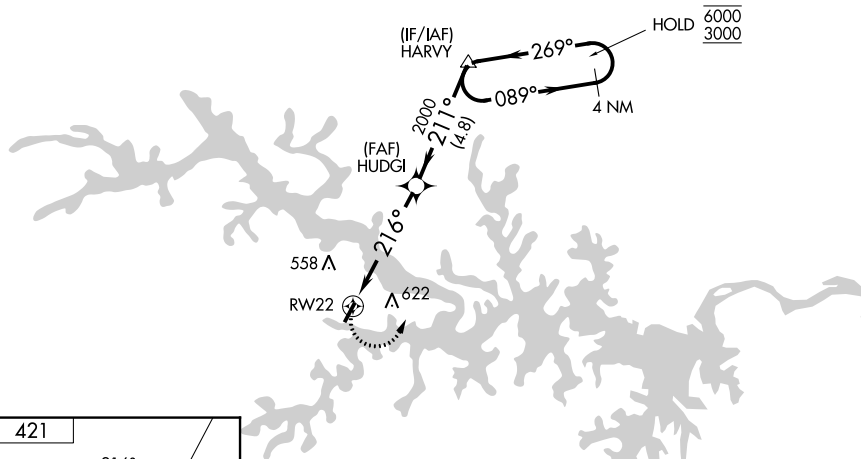
RNAV (GPS)-B

LAKE COUNTRY RGNL (W63)

RNP APCH - GPS.		MISSED APPROACH: Climbing left turn to 3000 direct HARVY and hold.
<p>▼ Rwy 22 helicopter visibility reduction below 1 SM NA.</p> <p>▲ Procedure NA at night. When local altimeter setting not received, use Chase City altimeter setting and increase all MDA 40 feet.</p>		
AWOS-3 118.225	WASHINGTON CENTER 118.75 377.1	CTAF 122.9

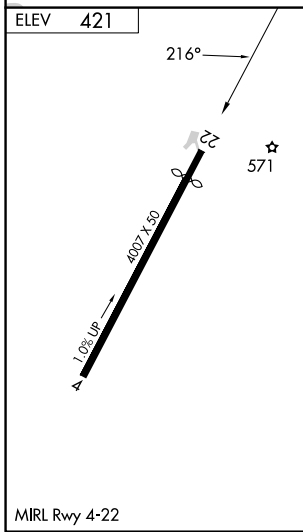


NoPT for arrival at HARVY on V3 southwest bound and on V266 westbound.



NE-3, 05 SEP 2024 to 03 OCT 2024

NE-3, 05 SEP 2024 to 03 OCT 2024



3000	HARVY	Visual Segment - Obstacles.		
	△			
		4 NM Holding Pattern		
RW22		HUDGI		
4.9 NM		4.8 NM		
216° heading		211° heading		
2000 MSL		6000/3000 MSL		
089° heading		269° heading		
CATEGORY	A	B	C	D
C CIRCLING	1440-3	1019 (1100-3)	NA	