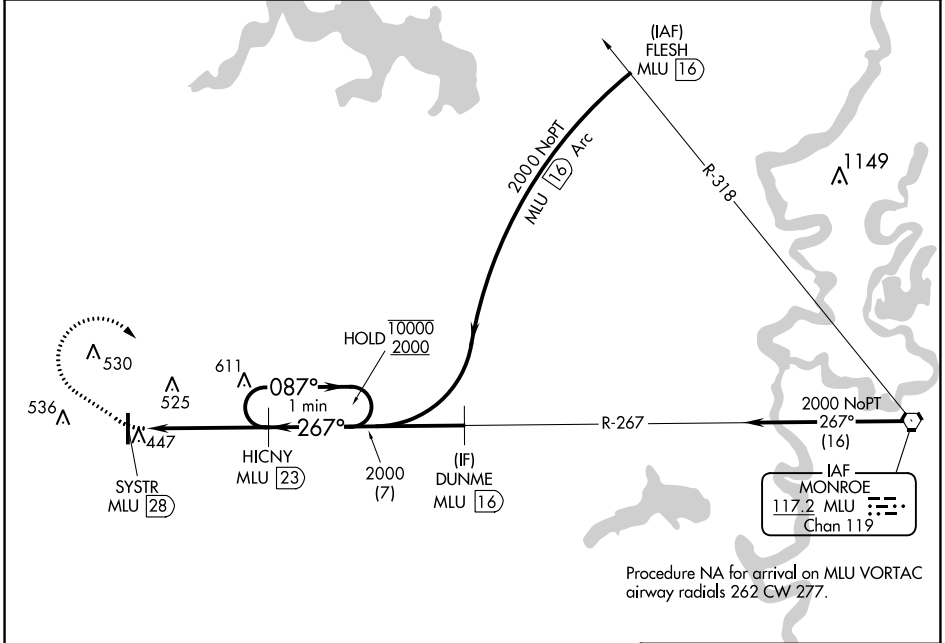


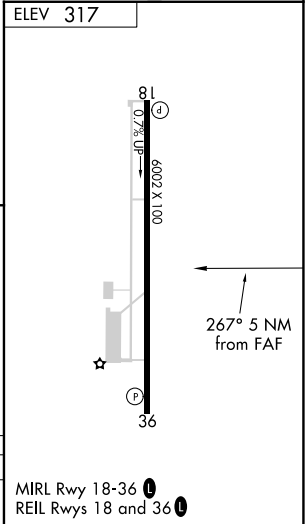
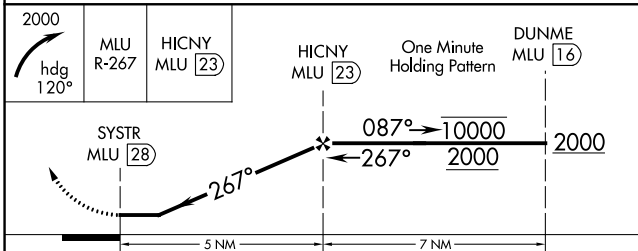
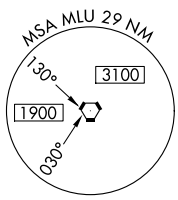
VORTAC MLU <b>117.2</b> Chan <b>119</b>	APP CRS <b>267°</b>	Rwy Idg TDZE N/A N/A Apt Elev <b>317</b>
---	------------------------	--

**VOR-A**  
RUSTON RGNL (RSN)

DME required.		MISSED APPROACH: Climbing right turn to 2000 on heading 120° and on MLU VORTAC R-267 to HICNY/23 DME and hold, continue climb-in-hold to 2000.	
AWOS-3PT <b>119.525</b>	MONROE APP CON * <b>126.9 307.9</b>	CLNC DEL <b>118.8</b>	UNICOM <b>122.7 (CTAF)</b>



Procedure NA for arrival on MLU VORTAC airway radials 262 CW 277.



CATEGORY	A	B	C	D
<b>C</b> CIRCLING	880-1	563 (600-1)	900-1½ 583 (600-1½)	960-2 643 (700-2)

SC-4, 05 SEP 2024 to 03 OCT 2024

SC-4, 05 SEP 2024 to 03 OCT 2024