

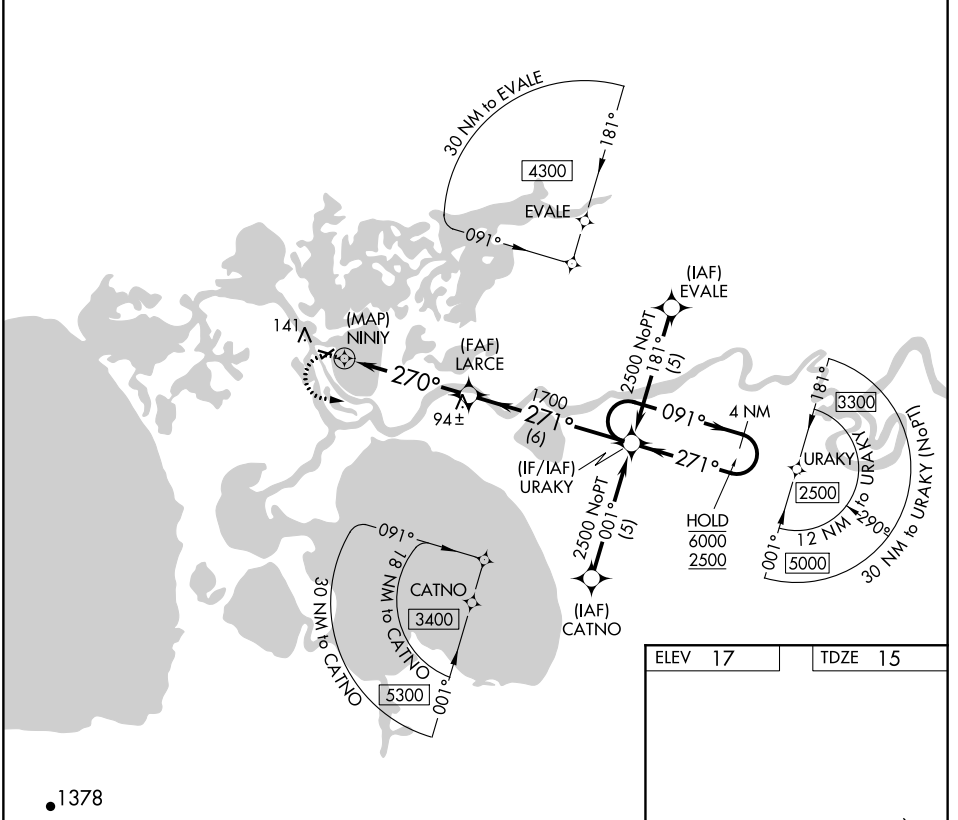
APP CRS 270°	Rwy Idg 2659
	TDZE 15
	Apt Elev 17

RNAV (GPS) RWY 27

SELAWIK (WLK) (PASK)

RNP APCH.	MISSED APPROACH: Climbing left turn to 2500 direct URAKY and hold.
<p>▼ Rwy 27 helicopter visibility reduction below 1 SM NA. Straight-in and Circling Rwy 27 NA at night, Circling Rwy 9 NA at night.</p>	

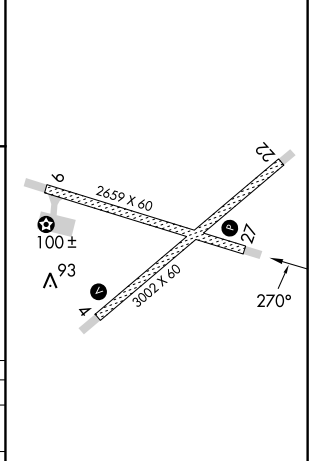
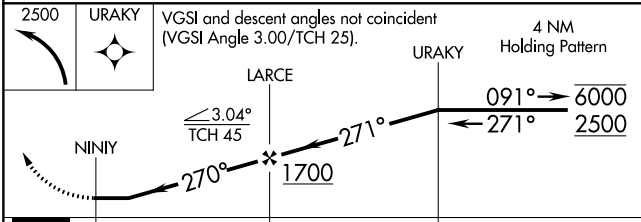
AWOS-3P 135.65	ANCHORAGE CENTER 119.2 263.0	KOTZEBUE RADIO 122.5	CTAF 122.7
--------------------------	--	--------------------------------	----------------------



AK, 05 SEP 2024 to 31 OCT 2024

AK, 05 SEP 2024 to 31 OCT 2024

ELEV 17	TDZE 15
---------	---------



CATEGORY	A	B	C	D
RNAV MDA	420-1	405 (500-1)	420-1¼	405 (500-1¼)
CIRCLING	480-1 463 (500-1)	580-1 563 (600-1)	580-1½ 563 (600-1½)	580-2 563 (600-2)

MIRL Rwy 9-27 and 4-22