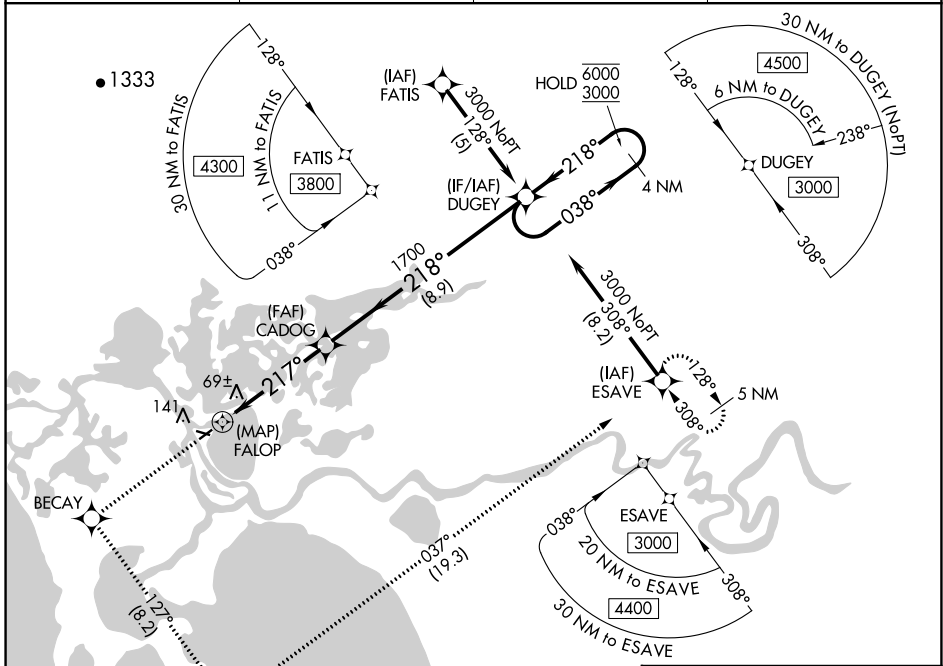


APP CRS	Rwy Idg	<b>3002</b>
<b>217°</b>	TDZE	<b>17</b>
	Apt Elev	<b>17</b>

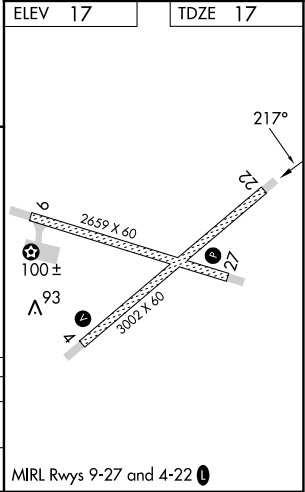
# RNAV (GPS) Y RWY 22

SELAWIK (WLK) (PASK)

RNP APCH. ▼ Circling Rwy 9, 27 NA at night.		MISSED APPROACH: Climb to 3000 direct BECAY and left turn on track 127° to APACU and left turn on track 037° to ESAVE and hold.	
AWOS-3P <b>135.65</b>	ANCHORAGE CENTER <b>119.2 263.0</b>	KOTZEBUE RADIO <b>122.5</b>	CTAF <b>122.7</b>



ELEV 17	TDZE 17			
3000 BECAY	APACU	ESAVE		
↑	tr 127°	tr 037°		
DUGEY 4 NM Holding Pattern				
CADOG				
FALOP	≤ 3.05° TCH 45	DUGEY		
217°	1700	038° → 6000 / ← 218° 3000		
0.5	4.6 NM	8.9 NM		
CATEGORY	A	B	C	D
LNAV MDA	320-1 303 (400-1)			
CIRCLING	480-1 463 (500-1)	580-1 563 (600-1)	580-1½ 563 (600-1½)	580-2 563 (600-2)



AK, 05 SEP 2024 to 31 OCT 2024

AK, 05 SEP 2024 to 31 OCT 2024

MIRL Rwy 9-27 and 4-22