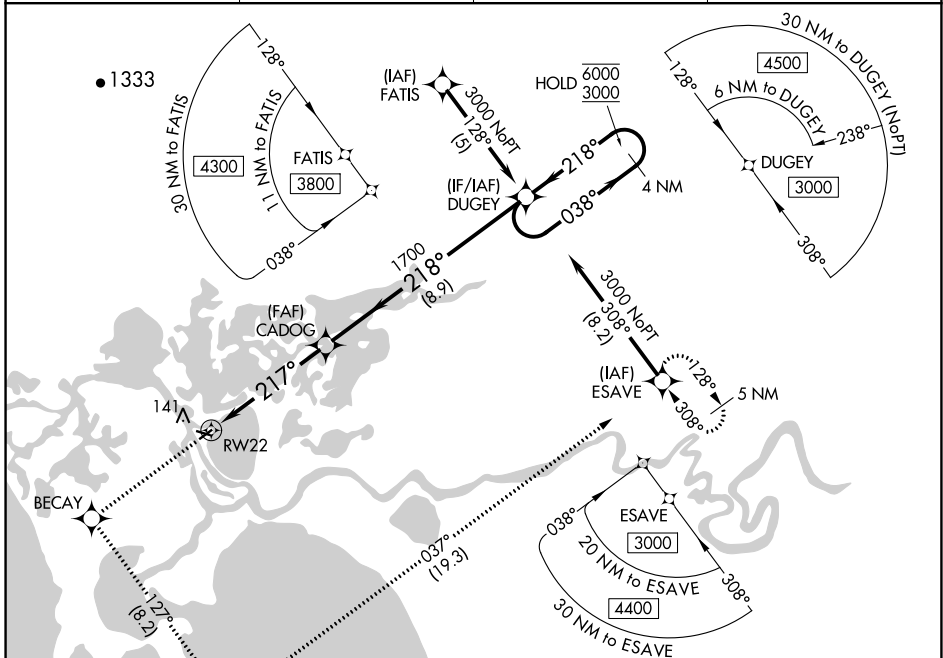


WAAS CH 40404 W22A	APP CRS 217°	Rwy Idg TDZE 17 Apt Elev 17	3002
--	------------------------	---	-------------

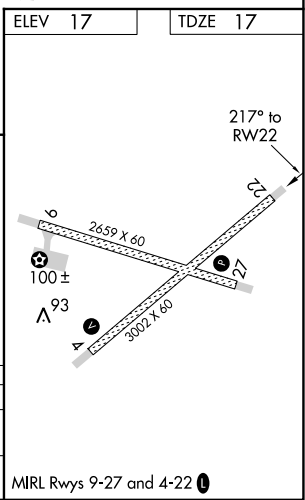
RNAV (GPS) Z RWY 22

SELAWIK (WLK) (PASK)

RNP APCH. ▼ For uncompensated Baro-VNAV systems, LNAV/VNAV NA below -25°C or above 49°C.		MISSED APPROACH: Climb to 3000 direct BECAY and left turn on track 127° to APACU and left turn on track 037° to ESAVE and hold.	
AWOS-3P 135.65	ANCHORAGE CENTER 119.2 263.0	KOTZEBUE RADIO 122.5	CTAF 122.7



ELEV 17	TDZE 17			
3000 BECAY	APACU	ESAVE	DUGEY	
↑	tr 127°	tr 037°	4 NM Holding Pattern	
<p>CADOG</p> <p>RWY 22 → 217° → 1700 → 218° → 6000/3000 → 038° → 218° → 6000/3000</p> <p>GP 3.00° TCH 45</p> <p>5.1 NM 8.9 NM</p>				
CATEGORY	A	B	C	D
LPV DA		267-1	250 (300-1)	
LNAV/VNAV DA		364-1¼	347 (400-1¼)	



AK, 05 SEP 2024 to 31 OCT 2024

AK, 05 SEP 2024 to 31 OCT 2024

MIRL Rwy 9-27 and 4-22