

VOR/DME WLK <b>114.2</b> Chan <b>89</b>	APP CRS <b>223°</b>	Rwy Idg <b>3002</b> TDZE <b>17</b> Apt Elev <b>17</b>
-----------------------------------------------	------------------------	-------------------------------------------------------------

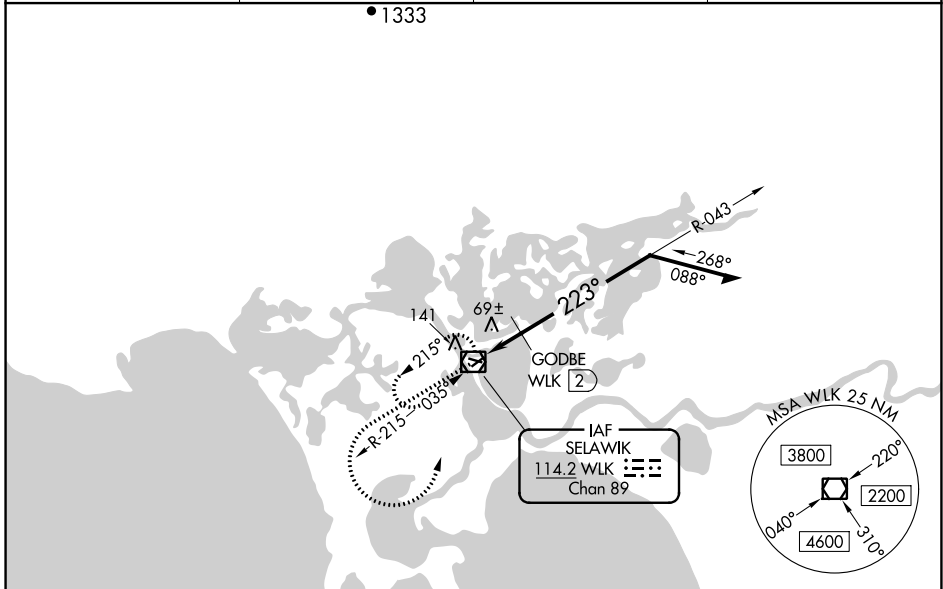
# VOR RWY 22

SELAWIK (WLK) (PASK)

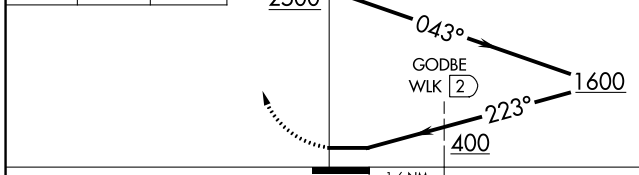
◀ Circling Rwy 9, 27 NA at night.

MISSED APPROACH: Climb to 1000 then climbing left turn to 2500 direct WLK VOR/DME and hold, continue climb-in-hold to 2500.

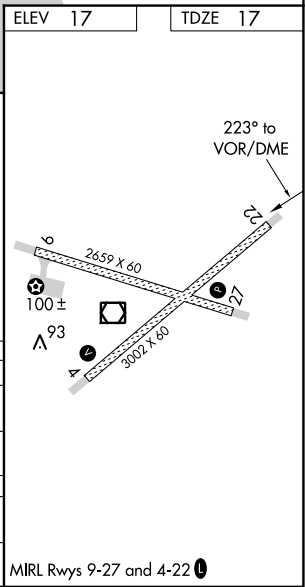
AWOS-3P <b>135.65</b>	ANCHORAGE CENTER <b>119.2 263.0</b>	KOTZEBUE RADIO <b>122.5</b>	CTAF <b>122.7</b>
--------------------------	----------------------------------------	--------------------------------	----------------------



1000	2500	WLK
↑	↪	◻



CATEGORY	A	B	C	D
S-22	400-1	383 (400-1)	400-1¼	383 (400-1¼)
CIRCLING	480-1 463 (500-1)	580-1 563 (600-1)	580-1½ 563 (600-1½)	580-2 563 (600-2)
GODBE FIX MINIMUMS				
S-22	340-1 323 (400-1)			
CIRCLING	480-1 463 (500-1)	580-1 563 (600-1)	580-1½ 563 (600-1½)	580-2 563 (600-2)



AK, 05 SEP 2024 to 31 OCT 2024

AK, 05 SEP 2024 to 31 OCT 2024