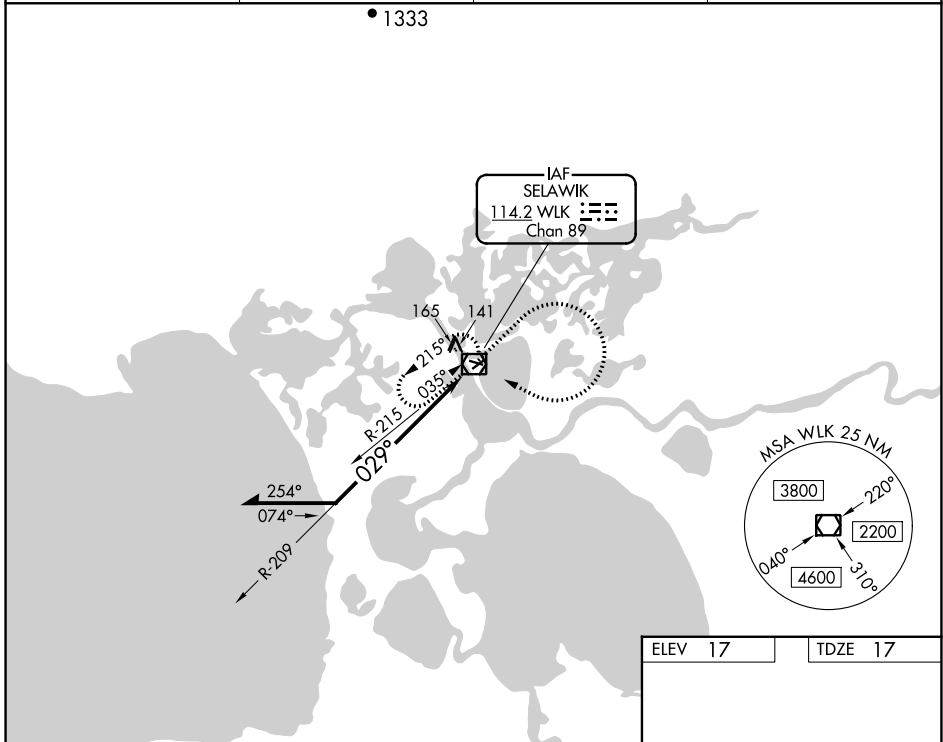


VOR/DME WLK <b>114.2</b> Chan <b>89</b>	APP CRS <b>029°</b>	Rwy Idg <b>3002</b> TDZE <b>17</b> Apt Elev <b>17</b>
---	------------------------	---

# VOR RWY 4

SELAWIK (WLK) (PASK)

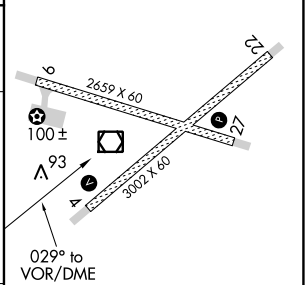
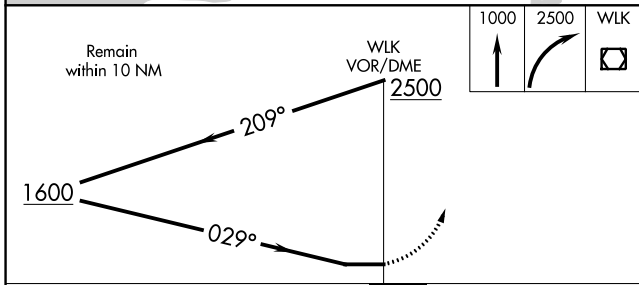
<p><b>▼</b> Rwy 4 helicopter visibility reduction below ¼ SM NA. Circling Rwy 9, 27 NA at night.</p>		<p>MISSED APPROACH: Climb to 1000 then climbing right turn to 2500 direct WLK VOR/DME and hold, continue climb-in-hold to 2500.</p>	
AWOS-3P <b>135.65</b>	ANCHORAGE CENTER <b>119.2 263.0</b>	KOTZEBUE RADIO <b>122.5</b>	CTAF <b>122.7</b>



AK, 05 SEP 2024 to 31 OCT 2024

AK, 05 SEP 2024 to 31 OCT 2024

ELEV <b>17</b>	TDZE <b>17</b>
----------------	----------------



CATEGORY	A	B	C	D
S-4	520-1	503 (600-1)	520-1½	503 (600-1½)
CIRCLING	520-1 503 (600-1)	580-1 563 (600-1)	580-1½ 563 (600-1½)	580-2 563 (600-2)

MIRL Rwy 9-27 and 4-22