

APP CRS	Rwy Idg	<b>4001</b>
<b>357°</b>	TDZE	<b>588</b>
	Apt Elev	<b>590</b>

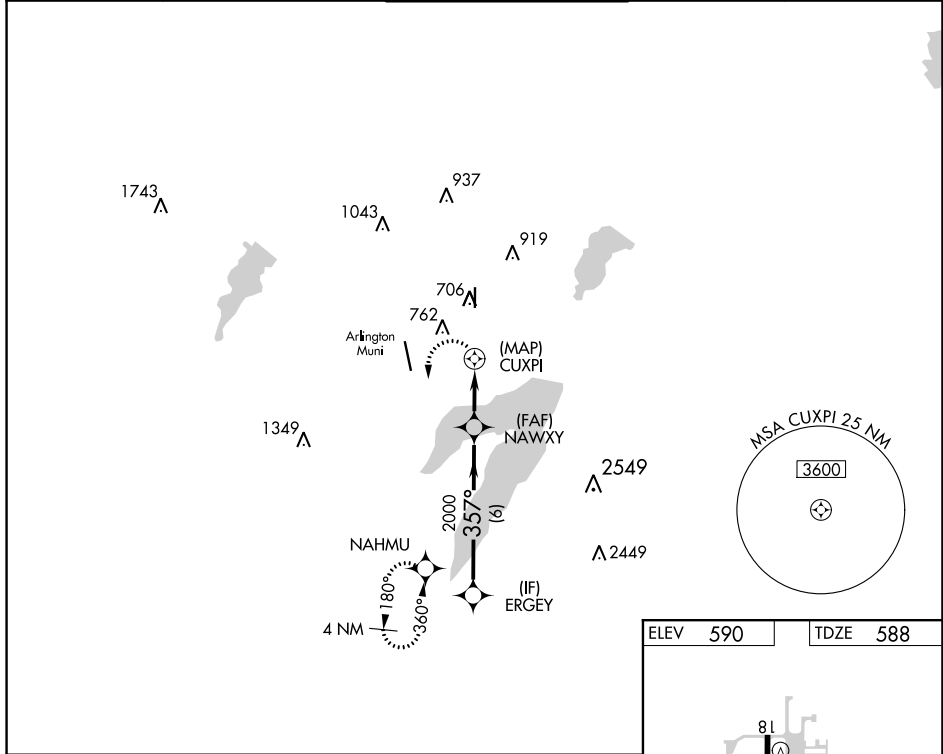
AL-9209 (FAA)

# RNAV (GPS) RWY 36

GRAND PRAIRIE MUNI (GPM)

RADAR required. RNP APCH - GPS.		MISSED APPROACH: Climbing left turn to 2400 direct NAHMU and hold.
	Circling Rwy 18 NA at night.	

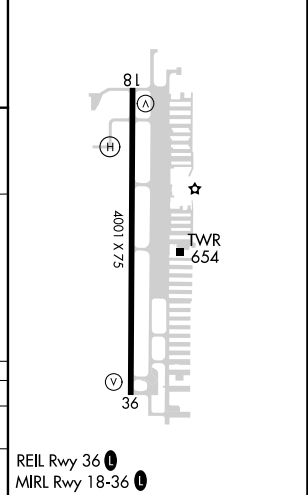
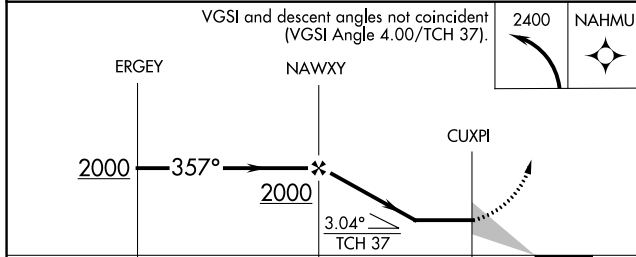
AWOS-3P <b>118.475</b>	REGIONAL APP CON <b>135.975 379.9</b>	GRAND PRAIRIE TOWER ★ <b>128.55 (CTAF) 0</b>	GND CON <b>121.15</b>	UNICOM <b>123.075</b>
---------------------------	--	---	--------------------------	--------------------------



SC-2, 05 SEP 2024 to 03 OCT 2024

SC-2, 05 SEP 2024 to 03 OCT 2024

ELEV	<b>590</b>	TDZE	<b>588</b>
------	------------	------	------------



CATEGORY	A	B	C	D
LNVA MDA	1020-2½	432 (500-2½)	NA	
CIRCLING	1100-2½ 510 (600-2½)	1280-2½ 690 (700-2½)	NA	